

UC BERKELEY UNDOCUMENTED STUDENT PROGRAM (USP)

A Model for Institutional Support and
Transformation



UNDOCUMENTED
STUDENT
PROGRAM



UNIVERSITY
OF CALIFORNIA
BERKELEY

AGENDA

01 /

The USP Model

02 /

No One Leads Alone

03 /

Getting Started

04 /

Resources

WHO WE ARE

The Undocumented Student Program (USP) provides guidance and support to undocumented undergraduate and graduate students at Cal.

The program's mission is to support the advancement of undocumented students within higher education and promote pathways for engaged scholars.

MISSION

HISTORY

2009

Following a student-led hunger strike, then-Chancellor Birgeneau launches a taskforce to study the needs and issues of undocumented students and make recommendations on how to support them.

2011

Students, staff, and faculty from the UC Berkeley Immigrant Student Issues Coalition presented recommendations regarding immigrant students on campus.

One called for a staff position specifically for undocumented student support and success.

2012

UC Berkeley launches the Undocumented Student Program (USP) as central hub for students and campus/community/national partners. Meng So is hired as program coordinator.

OUR MODEL AND FRAMEWORK

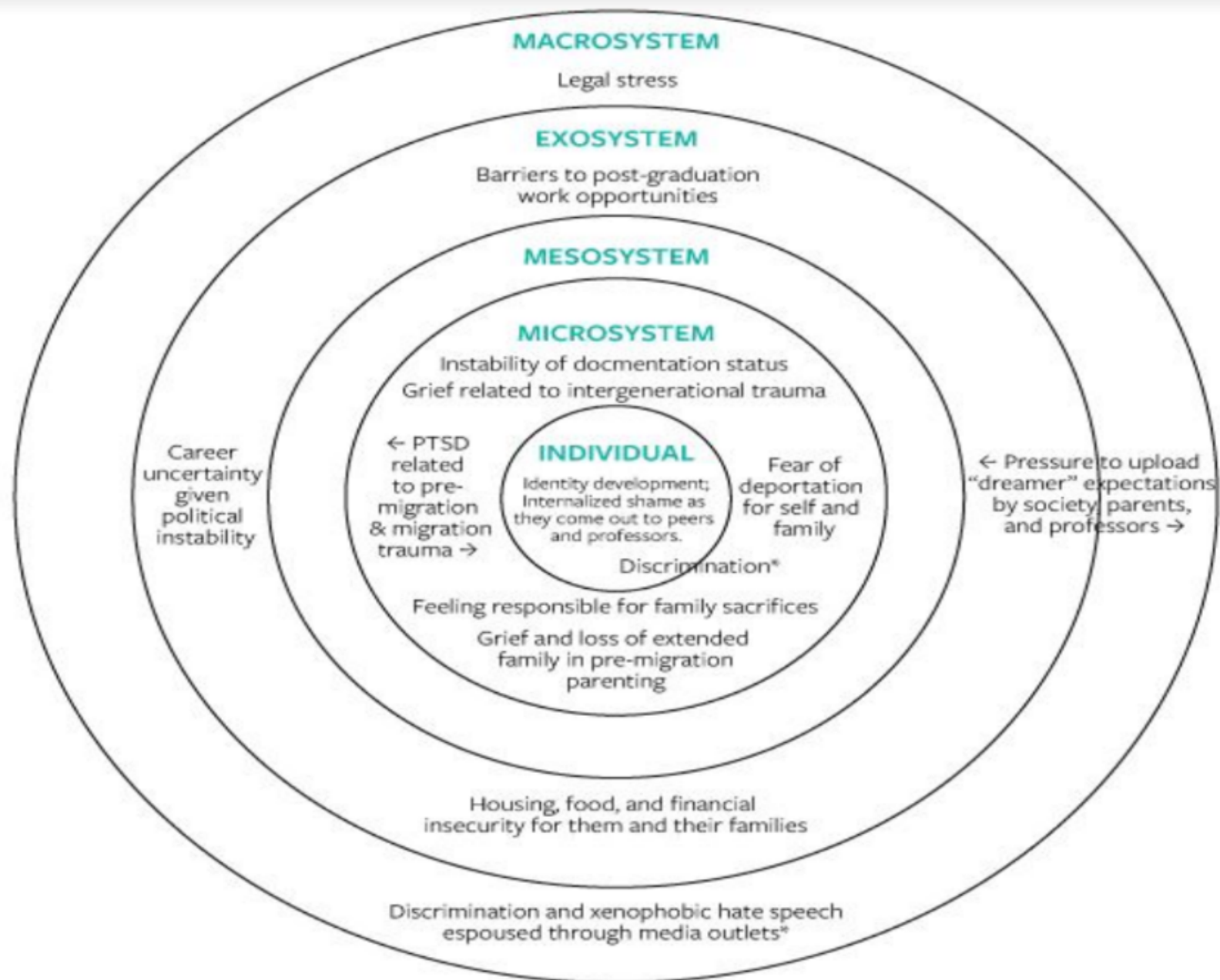
Student Dominant Themes/Frequent Practices

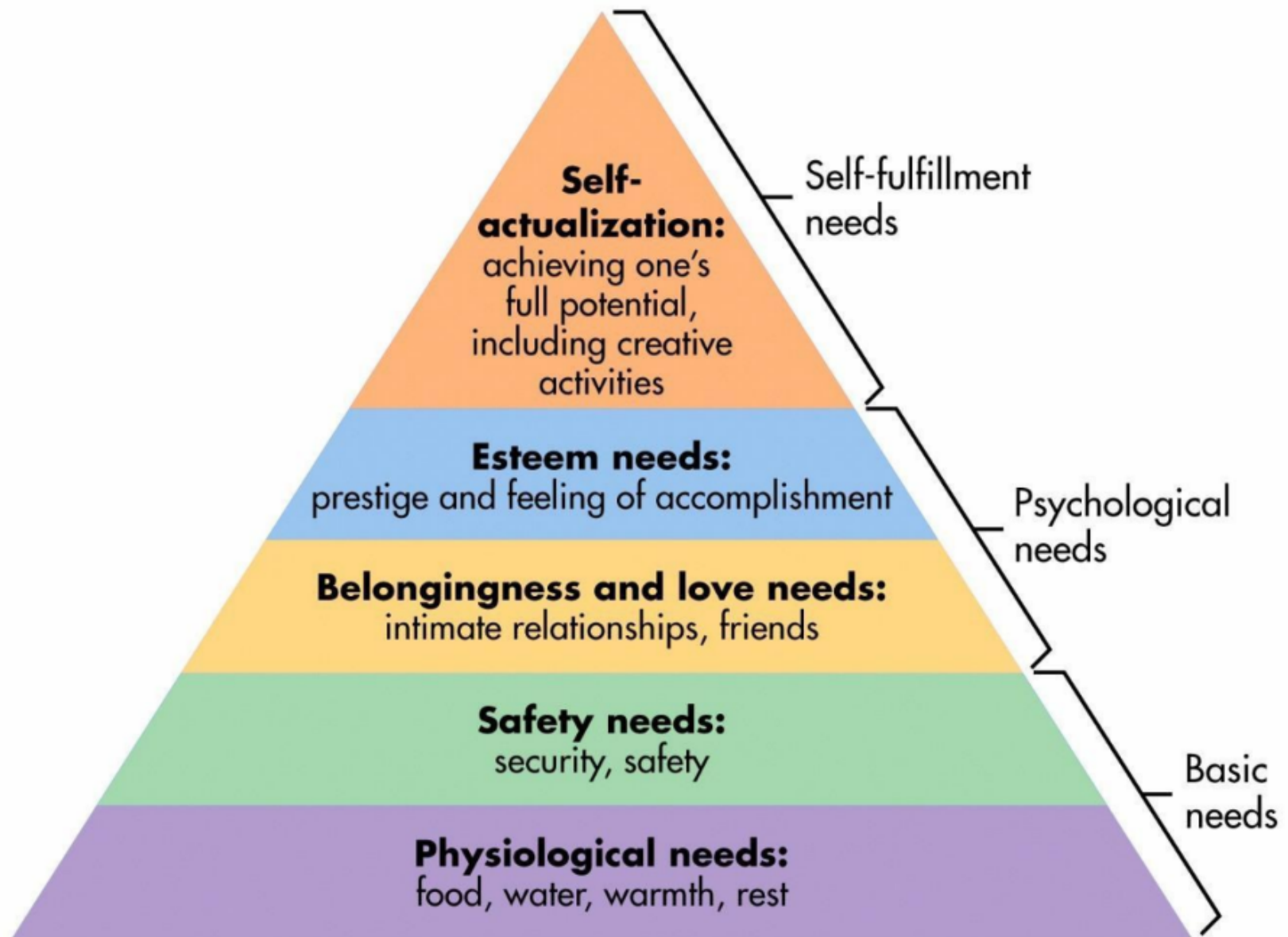
- Must acquire “know-how” necessary to succeed (first-gen)
- Understand the mechanics of financial aid and managing the expense of a university education (low-income)
- Transition issues - building confidence in a competitive environment, living on their own for the first time, dealing with the emotional experience of college transition
- Personal responsibilities: employment, student parent, family caretaker/ provider, etc.

CHARACTERISTICS

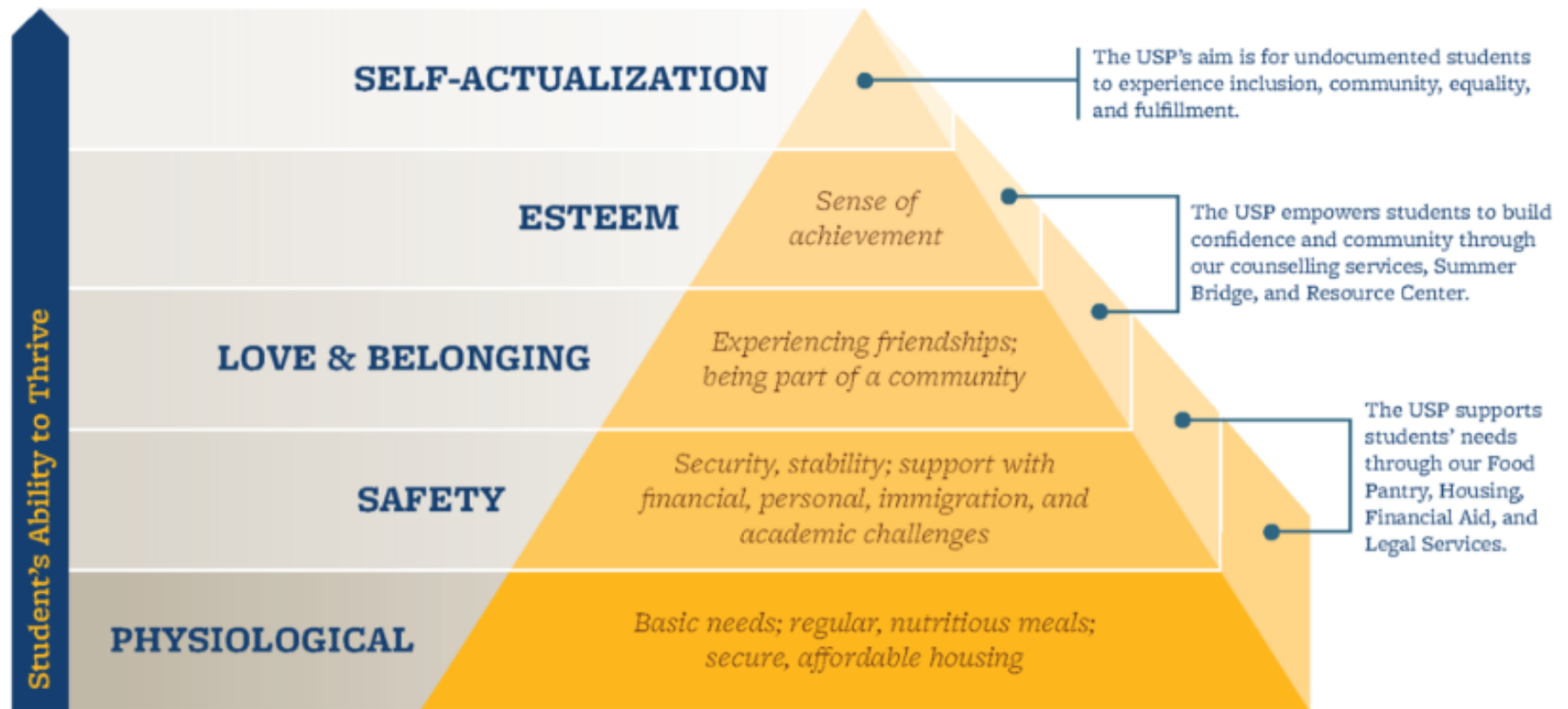
A 2014 joint study of undocumented students at Berkeley w/Berkeley Law found the following:

- Most students (57%) come from mixed-immigration status families with documented siblings
- Almost all students (88%) are below 150% of the federal poverty line
- Three quarters (76%) skipped meals or reduced meal sizes
- Almost a quarter of students (21%) experienced homelessness or unstable housing while at Berkeley

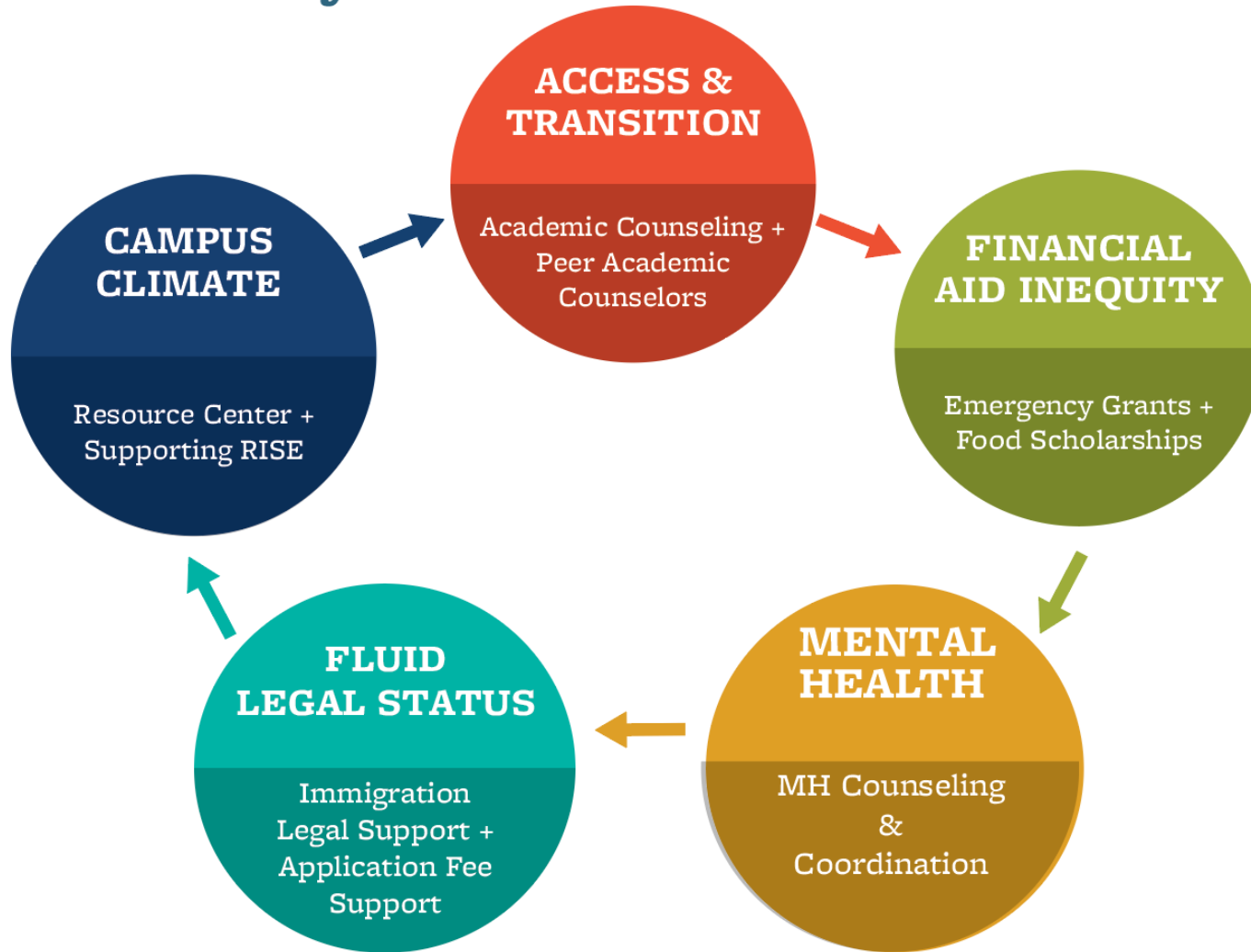




MASLOW'S HIERARCHY OF NEEDS APPLIED TO THE UC BERKELEY USP



USP's Approach: Viewing UC Berkeley as a Holistic Ecosystem for Undocumented Students





No one leads
alone,
and no one ever has...

STUDENT LEADERSHIP

CAMPUS

SATURDAY, APRIL 16, 2016

Students block Sather Gate on Cal Day in protest of treatment of undocumented UC students



Bringing people to the table...

Allies

- Experts
- Supporters

Key
Individuals

- Gatekeepers/Gate openers

Leaders

- Formal
- Informal

UndocuCollege Guide: *California*

Foundational:

- Individuals
- Student Clubs
- Informational Materials

Emerging:

- Task Force
- Dedicated Staff
- UndocuAlly Training

Comprehensive:

- Sustained/Open Funding
- Comprehensive Resource Centers
- Innovative Problem Solving

The Three Pillars of Undocumented Student Support



From "Demystifying Dream Centers" by Pamela Ortiz Cerda



Collect data to identify key needs

Assess your assets and allies

Connect with other programs

GETTING STARTED



CA UNDOCUMENTED HIGHER EDUCATION COALITION

☰

California Undocument...

🔍

⋮

☑

University of California

▼

★

University of California, Berkeley

★

University of California, Davis

★

University of California, Irvine

★

University of California, Los Angeles

... 6 more

☑

California State University

▼

📍

California State University, Bakersfield

📍

California State Maritime Academy

📍

California State University, Channel Islan...

📍

California State University, Chico

... 19 more

☑

California Community Colleges

collegecampaign.org/cuhec_student_resources/

IMMIGRANTS RISING



TRANSFORMING LIVES THROUGH EDUCATION

immigrantsrising.org

UNDOCUCOLLEGE GUIDE & EQUITY TOOL CALIFORNIA 2016

WORKING TOWARD EDUCATIONAL EQUITY & INCLUSION OF UNDOCUMENTED
STUDENTS AT INSTITUTIONS OF HIGHER EDUCATION IN CALIFORNIA

Resources and
presentations for both
students and educators

- Paying for college - financial aid, scholarships, etc.
- UndocuAlly Trainings
- Entrepreneurship
- Immigration law and policy

DISCOVER OUR MODEL

Learn more about our program at
discoverourmodel.berkeley.edu



Includes:

- information on how we have developed our program
- data illustrating who we serve
- measurable impacts we've had since the program began

UNDOCUGRAD



QUESTIONS?

Contact

Madeleine Villanueva
Academic Counselor

madeleiv@berkeley.edu
undocu.berkeley.edu

