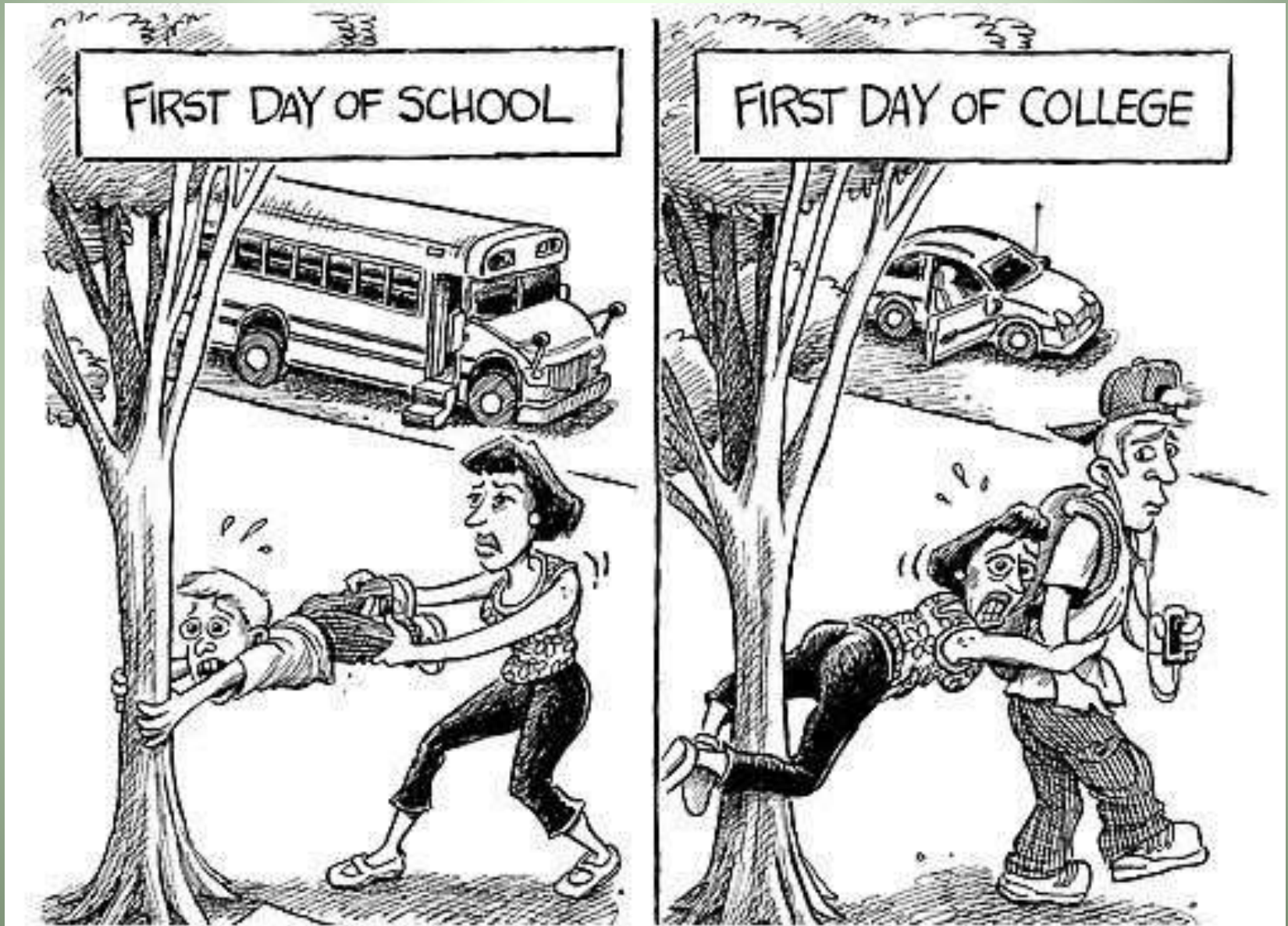


The College Search From Stress to SUCCESS

Finding the Perfect College AND How to Pay for IT!!

SHARE, LEARN
— AND —
C@NNECT

Going to College? Expect changes!



From Stress



to **SUCCESS!**



From Stress to SUCCESS!

**Ask Questions?
Follow Directions!!**

Sounds Easy! Right?

From Stress to SUCCESS!

How to find
the Perfect College
& Pay for It!

It Cost\$ A LOT !

Today You'll Meet:



Sara Buswell

Associate Director of Admissions

Washington State University

Email :: SBuswell@WSU.edu

Today You'll Meet:



Chris O'Sullivan

Admissions Counselor

George Mason University

Email :: cosulli@gmu.edu

Today You'll Meet:



Gary B

Admissions Counselor

University of New Mexico

Email :: **GaryB@UNM.edu**

Thanks for Coming to the Show!

Today You'll Meet:



GaryB

Admissions Counselor

University of New Mexico

Email :: **GaryB@UNM.edu**

Thanks for Coming to the Show!

Every College



Admission Counselors



What is RACC?

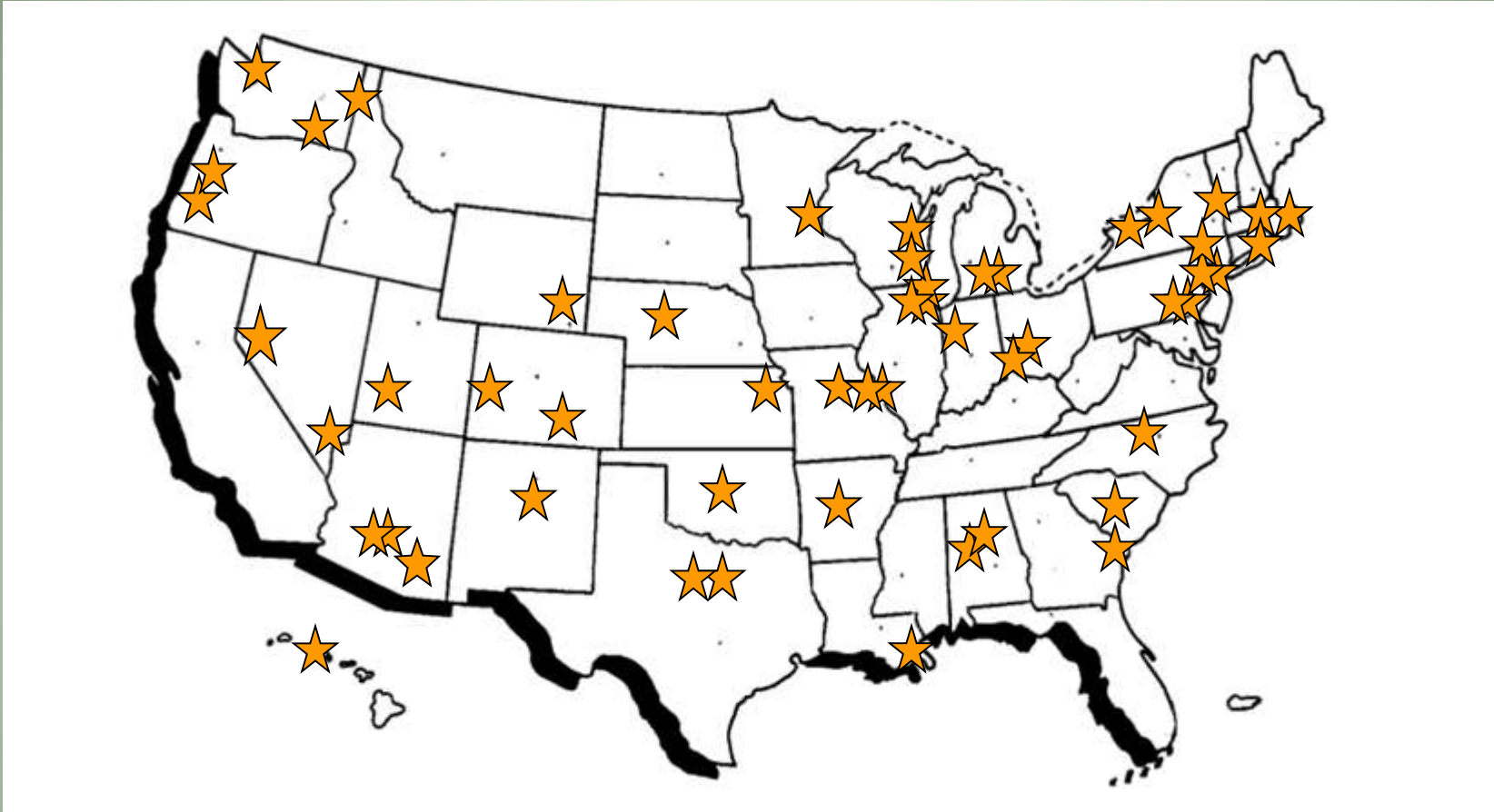


The Regional Admission Counselors of California (**RACC**) is an organization comprised of over **160 admission professionals**, from **116+ institutions**, who work with students and counselors throughout northern and southern California while representing universities and colleges outside of California. *Est. 1989*

We live here in California!

Regional Admission Counselors of California

www.regionaladmissions.com

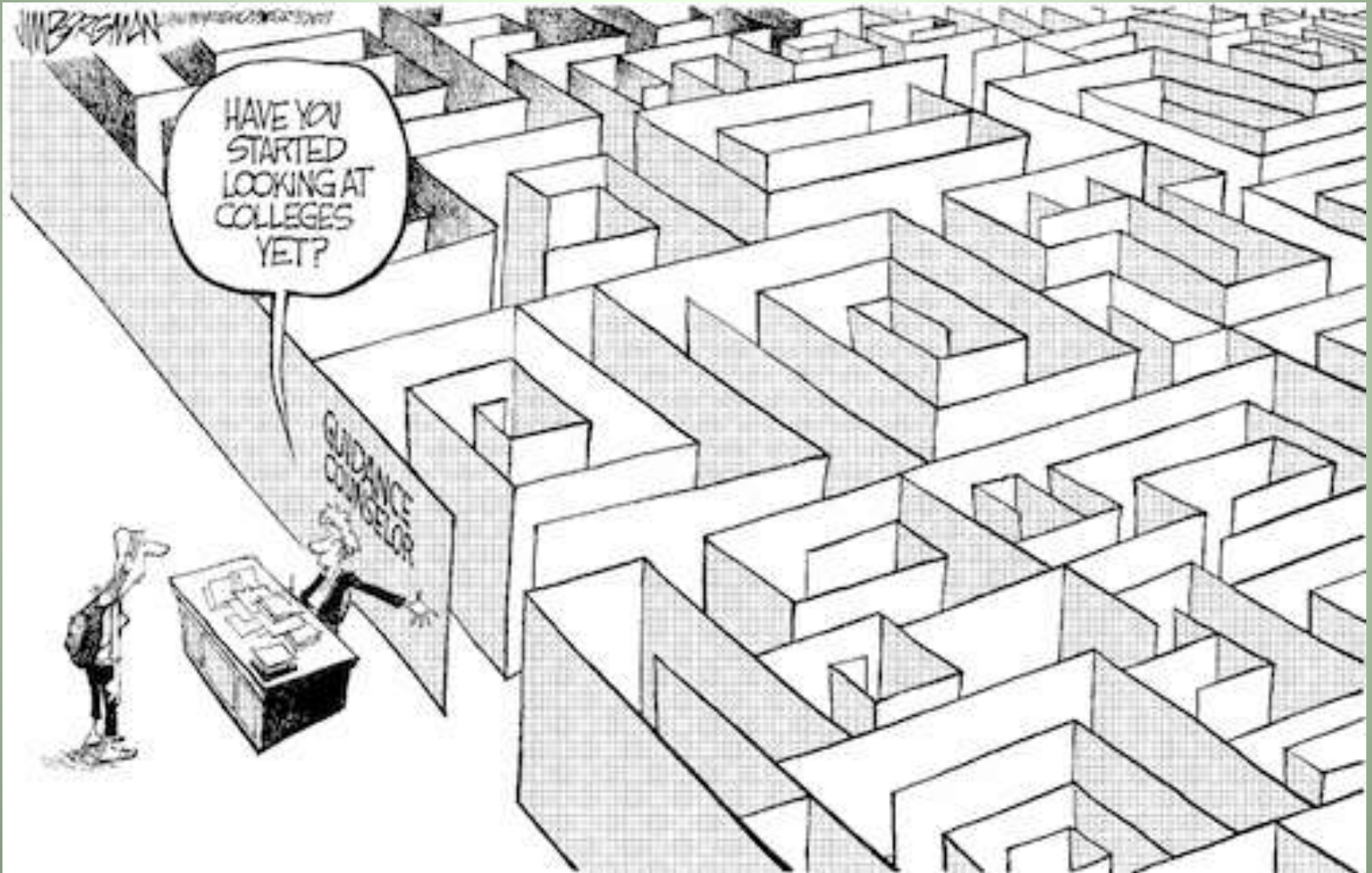


Arizona State University ~ Bennington College ~ Colorado Mesa University ~ Columbia College Chicago ~ Connecticut College ~ Culinary Institute of America ~ Drew University ~ Drexel University ~ Grand Canyon University ~ Hawaii Pacific University ~ High Point University ~ Hillsdale College ~ Johnson and Wales University ~ Lake Forest College ~ Lasell College ~ Lawrence University ~ Loyola University Chicago ~ Loyola University New Orleans ~ Maryville University ~ Miami University ~ Michigan State University ~ Milwaukee School of Engineering ~ Northeastern University ~ Oklahoma City University ~ Oregon State University ~ Purdue University ~ Regis University ~ Saint Louis University ~ Samford University ~ Savannah College of Art and Design ~ Seton Hall University ~ Southern Methodist University ~ Southern Utah University ~ Syracuse University ~ Texas Christian University ~ University of Alabama ~ University of Arizona ~ University of Colorado-CO. Springs ~ University of Kansas ~ University of Minnesota ~ University of Nevada-Reno ~ University of New Mexico ~ University of Rochester ~ University of South Carolina ~ University of the Arts ~ University of Washington Bothell ~ University of Wyoming ~ Whitman College ~ William Woods University ~ Xavier University

Who are we?



Going to College? It's an aMAZEing process!



Creating Options:
Finding the Perfect College
& How to Pay for It!



Welcome
Class of
2021



Creating Options:
Finding the Perfect College
& How to Pay for It!



Welcome
Class of
2022



Creating Options:
Finding the Perfect College
& How to Pay for It!



Welcome
Class of
2023



Growth and Learning

- New location: weather, food, city, **environment to explore**
- New culture: local events, norms, foods, traditions, customs
- Learn about who you are!
- Making new friends
- Growth in confidence
- Learn independence!!

Going to College? Start early!!



Creating Options In Your College Search

Students going to College are ...

Eager & Excited!

Nervous?

Conflicted!?

ACT / SAT? Both!



"We were originally thinking SAT, but then Noah's admissions advisor told us left-handed students born on Tuesdays do better on the ACT."

The College Essay

ZITS

BY JERRY SCOTT AND JIM BORGMAN



Conquering Your Fears!

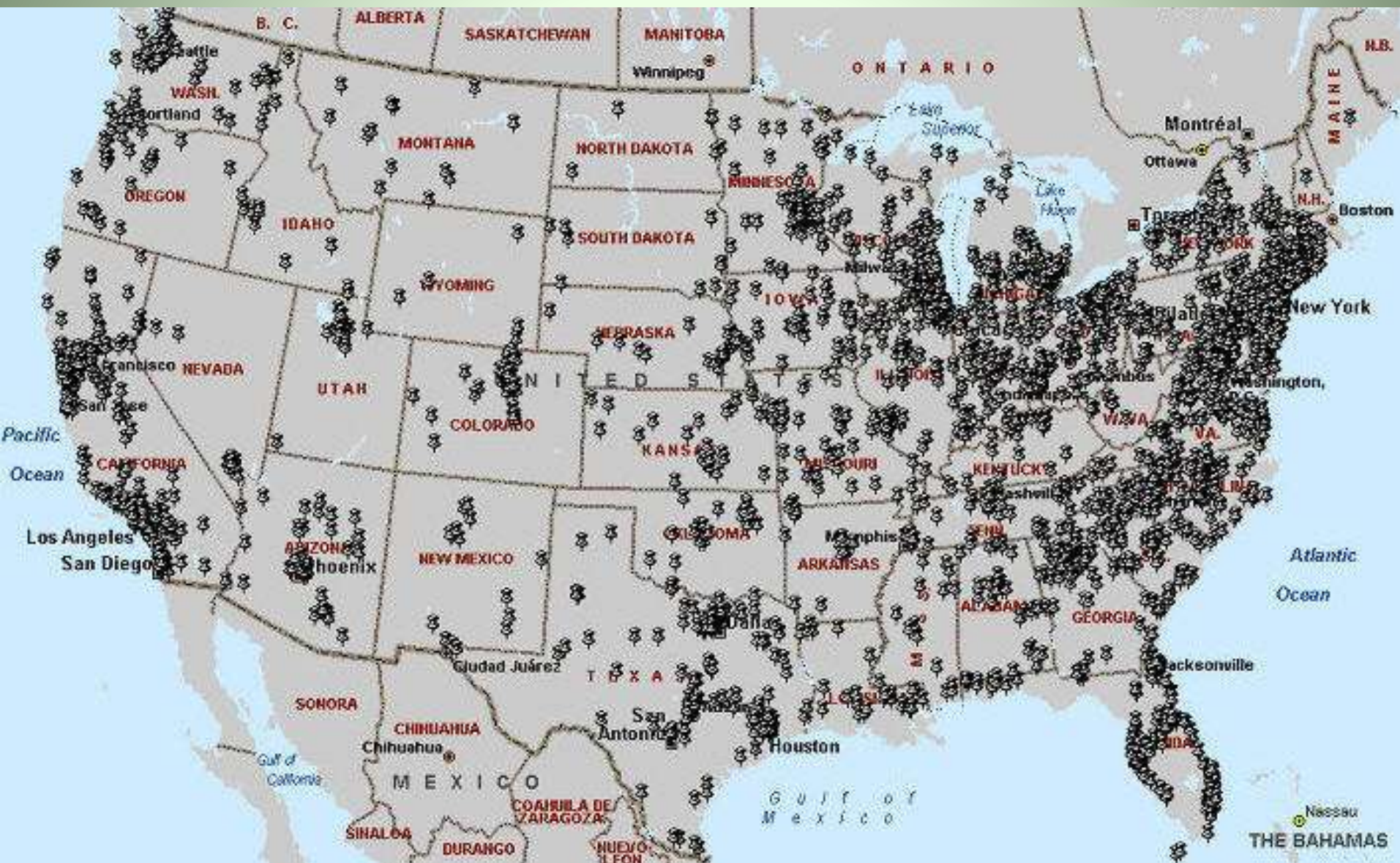


- For Students, the scariest part of College Admissions is getting into the college of their choice.
 - For their Parents, the scariest part is paying for it!!!
-

It's Not a Matter of If or When: Just **WHERE!**



Where are US Colleges & Universities located?



Creating Options: Finding the Perfect College

5 'Systems' of Higher Education:

4 in California & the 5th Option!



VS



Welcome to California !



Creating Options: Finding the Perfect College

The Whole World  California!



Creating Options: Finding the Perfect College

Higher Education in California !

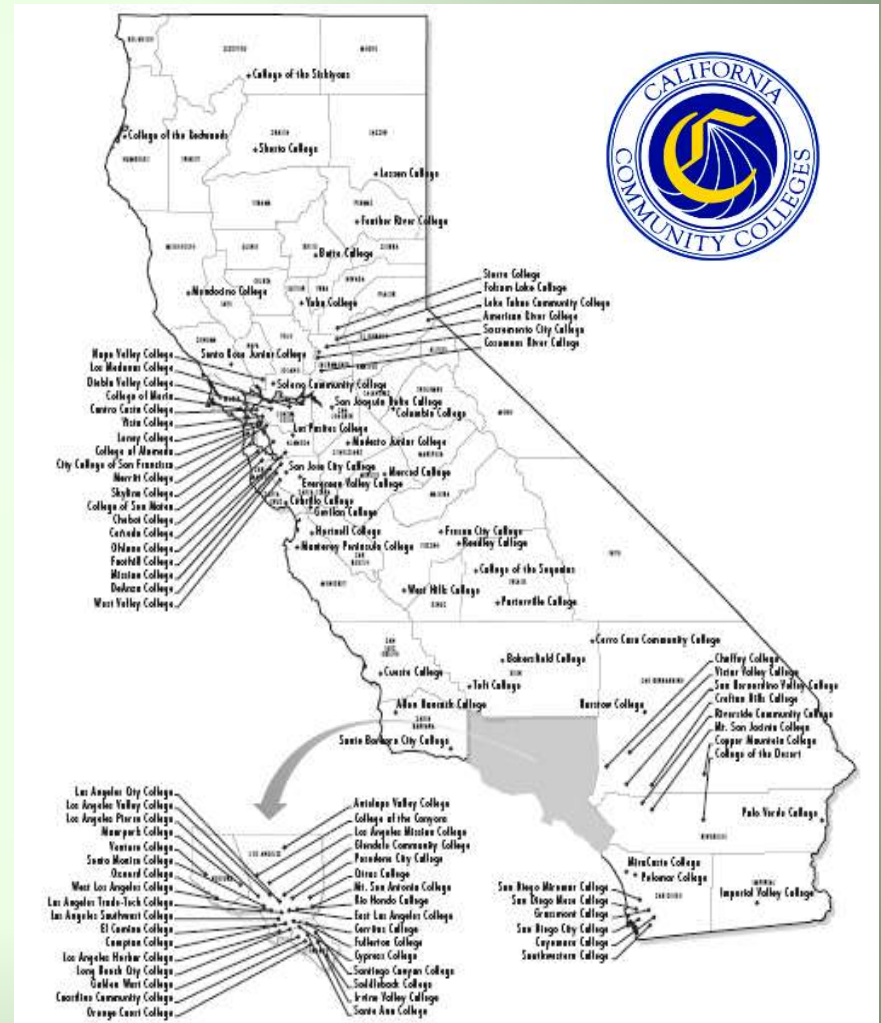


Question # 1

- **Name the Higher Ed options for California students:**

California Community Colleges

- 112 campuses
- Are open to any students pursuing higher education
- Provide **Transfer Options** for students seeking a B.A. / B.S.
- Offer **Vocational Training**
- **Early Admissions Process** starts November – May . Plan to participate in an application workshop, English and Math assessment test, and the college's New Student Orientation.



California State University

- 23 Campuses
- Eligibility Requirements:
 - [A-G Courses](#)
 - [2.0 GPA Minimum](#)
 - [SAT Reasoning](#) Exam Score or [ACT](#) Exam Score
- Applications accepted from [October 1st to November 30th](#)
- Impacted Campuses will have stricter requirements



www.calstate.edu/apply

Welcome to Cal State Apply

Application Filing Periods

Fall Entry (Freshmen): Oct. 01 – Nov. 30

www.calstate.edu/apply

- **\$70.00 application fee** (Fee waivers are available and built into the application!)
- What you **do not need** to apply:
 - ❌ Personal Statement/Essay –
 - ❌ Letters of Recommendation
 - ❌ Extra Curricular Activities



What's New

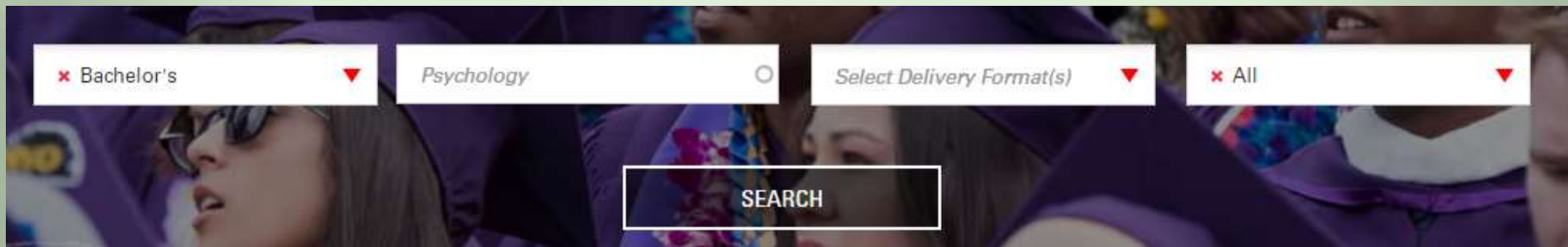
- You can now fill out ONE application and submit it to all 23 CSU campuses.
- Impacted campuses may ask for supplemental applications.
- EOP applications are now a part of the overall application.
- Only enter scores for tests that you have taken.
- 'A-G Matching' section helps you keep track of your courses.
- Transfer students must enter ALL previous college course work in order to determine admissibility.
- Payment must be submitted in order to finish application!



Find Your Program & Major

degrees.calstate.edu

- Search and find the CSU campus that offers the program you are looking for by using keywords.
- Once you find the right program, click on the “Get Started” link to begin working on your application.

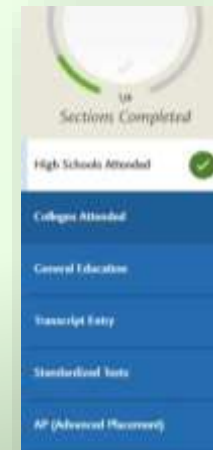


CAMPUS ▲	DEGREE	UNITS REQUIRED	MAJOR (CONCENTRATION)	VIDEO	FORMAT	PROGRAM CODE	SOURCE	APPLY
Bakersfield	BA	120 sem	Psychology (Psychology - General)		Face-to-Face ⓘ	20011	Campus ⓘ	Get Started
Channel Islands	BA	120 sem	Psychology (Psychology - General)		Face-to-Face ⓘ	20011	Extension ⓘ	Get Started
Channel Islands	BA	120 sem	Psychology (Psychology - General)		Face-to-Face ⓘ	20011	Campus ⓘ	Get Started
Chico	BA	120 sem	Psychology (Psychology - General)		Face-to-Face ⓘ	20011	Campus ⓘ	Get Started

Overview of Application



- Be as thorough as possible when filling out your “Profile” and “Extended Profile” section!
- After completing your profile, you will select the programs you are interested in applying to. App fees will reflect how many programs you are applying to.
- The application consists of 4 quadrants, each consisting of a “progress meter.”
- Use the column on the left side of the screen to navigate to each section within the quadrant.



Applying as a First-Time Freshman



- Indicate if the course is AP, IB, or Honors by using the drop-down menu.
- When entering your coursework, make sure to click “Save All” after completing each term.
- Use the A-G Matching section to make sure you meet all the a-g requirements.

High School Coursework

9th Grade 2015-2016 at ADOLFO CAMARILLO HIGH SCHOOL

COURSE TITLE	FALL	SPRING	COURSE TYPE
English 1	A	A	None
Drama 1 (P)	A	A	None
French 1	B	B	None

Integra

Ex: A Ex: A Select Course Type

Transcript. If Your High School is in our Database, you will see suggestions as you type.

CAMARILLO HIGH SCHOOL

A-G Matching

As a first-time freshman applicant, you must complete A-G Subject requirements by your high school graduation date. Based on the courses that you have reported, below is the summary of each subject, along with the number of years completed.

A-G Subject Totals		
Subject		Years
A	History / Social Science (2 Years)	2
B	English (4 Years)	3
C	Mathematics (3 Years)	2
D	Laboratory Science (2 Years)	2
E	Language Other than English (2 Years)	2
F	Visual & Performing Arts (1 Year)	2
G	College-Preparatory Elective (1 Year)	1.5

Total Years 14.5
Calculated GPA 3.21

Update A-G Courses

Tips For Your Application



- Citizenship is not the same as Residency!
- The entire application process takes about 2 to 3 hours to complete.
- Use the blue “Save and Continue” box in order to continue. If it is grayed out, then additional information is required before moving on to another area.
- Download your submitted application at the end as a PDF for your records.
- Once you submit your application, you will receive a confirmation email to indicate it was received.
- CSU will send you an email to set up your Student Portal within a week of applying.

Account Information

User Name

Password

Confirm Password

Security Question

Security Answer

Save Changes

Account Information

User Name

Password

Confirm Password


Security Question



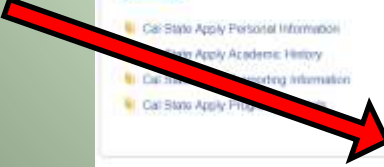
Security Answer

Save Changes

Need Help?



- Your CAS ID number on the top right corner of your screen is used when working with Tech Support.
- Click on the  icon on the top right corner of your screen for an email or FAQ option.
- To get Live Chat help:

- 1) 
- 2) 
- 3) 

Cal State Apply

Contact Us

Ekho Dolphin
CAS ID: 0123456789

Exit

CAS ID: [input type="text"]

First Name: Ekho

Last Name: Dolphin

Phone Number: +18054578520

Email Address: ekho.dolphin@csuci.edu

Confirm Email: [input type="text"]

Issue Topic: [input type="text"]

Message Subject Line: [input type="text"]

Place explain your issue or question: [input type="text"]

Live Chat

Need Help?



- Your CAS ID number on the top right corner of your screen is used when working with Tech Support.
- For faster service, contact us using the Live Chat feature at the bottom of each page in this help center. Alternatively, contact us at 857-304-2087
- Hours of operation: Monday-Friday, 6am-5pm PT.
- We typically provide responses to emails within 2 business days; however, response times can take up to 3 business days when we're at our busiest.
- Be sure to have your CAS ID # (located under your name in the upper-right corner of the application) when contacting Cal State Apply via phone or email.

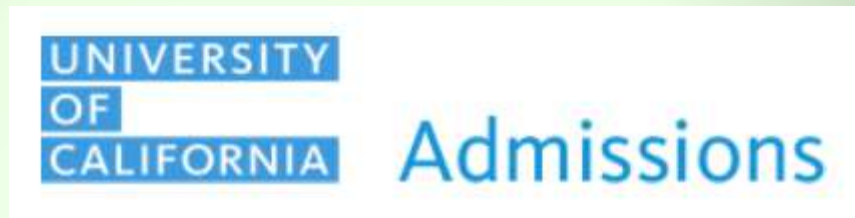
University of California

- 10 campuses –
(only 9 open for undergraduates)
- Minimum eligible GPA is 3.0
- Application is based upon:
 - A-G Courses and GPA
 - SAT Reasoning or ACT with Writing
 - Extracurricular Activities and Involvement
 - Personal Insight Questions
- Applications accepted from
November 1st to November 30th





California Community Colleges



Transfer Admission Guarantee

Six UC campuses offer the Transfer Admission Guarantee (TAG) program for California community college students who meet specific requirements.

TAG by campus

- > [Davis](#)
- > [Irvine](#)
- > [Merced](#)
- > [Riverside](#)
- > [Santa Barbara](#)
- > [Santa Cruz](#)

Dates & Deadlines

Dates & Deadlines	Task/Activity
August 1	UC application opens www.univeristyofcalifornia.edu/apply
November 1-30	Submit UC application online
December	Last month to take SAT/ACT exams & Update ACT/SAT test results
March	Notification of admission
May 1	SIR deadline for freshmen Waitlist activity by UC campuses
July 1	Transcript deadline, sending official transcript to the 1 UC campus a student SIR'd to
July 15	Submit test scores (AP, IB, etc)

14 Factors - Comprehensive Review

1. Grade-point average

2. Test scores

3. Performance in & # of courses beyond min. 'a-g' requirements

4. UC-approved honors courses & advanced courses

5. Eligibility in the Local Context (ELC) – CA residents

6. Quality of senior-year program of study

7. Academic opportunities in California high schools

8. Outstanding performance in one or more academic subject areas

9. Achievements in special projects

10. Improvement in academic performance

11. Special talents, achievements and awards

12. Participation in educational preparation programs

13. Academic accomplishment in light of life experiences

14. Geographic location

UC Los Angeles

Freshman admission profile

Fall 2018

Applications: 113,748

Admits: 16,020

Admit Rate: 14%

<http://admission.universityofcalifornia.edu/campuses/ucla/freshman-profile/index.html>

UC Santa Barbara

Freshman admission profile

Fall 2018

Applications: 92,305

Admits: 29,782

Admit Rate: 32%

Please be cautious in drawing conclusions from this information.

Use it as a general guide to selectivity and not as a predictor of your chance for admission to **UC Irvine**

Admit rate —	40.7%
Overall	
• Admits	31,639
• Applicants	77,817
• California Residents	
(% of admits)	67%

Please be cautious in drawing conclusions from this information.

Use it as a general guide to selectivity and not as a predictor of your chance for admission to **UC Irvine**

Averages

- High School GPA **4.08**
- ACT Composite Score **29**
- SAT Critical Reading **610**
- SAT Mathematics **690**

Independent Colleges and Universities

- 75 Campuses throughout California
- May provide large scholarship/financial aid packages
- Smaller class size
- Faster graduation rates
- Target students that are of good academic standing and in line with the school mission
- Each schools requirements and Deadlines will VARY – check online

www.aiccu.org

Main AICCU Campuses by Region*

1. Northern California (1)

Simpson University	Redding
--------------------	---------

2. SF Bay Area (19)

California College of the Arts	San Francisco
Calif. Institute of Integral Studies	San Francisco
Dominican University of California	San Rafael
Golden Gate University	San Francisco
Holy Names University	Oakland
Institute of Transpersonal Psychology	Santa Clara
Mills College	Oakland
Notre Dame de Namur University	Belmont
Pacific Union College	Angwin
Palo Alto University	Palo Alto
Saint Mary's College of California	Moraga
Samuel Merritt College	Oakland
San Francisco Art Institute	San Francisco
San Francisco Conservatory of Music	San Francisco
Santa Clara University	Santa Clara
Saybrook University	San Francisco
Stanford University	Stanford
Touro University - California	Vallejo
University of San Francisco	San Francisco

3. Central Valley (4)

Fresno Pacific University	Fresno
Humphreys College	Stockton
University of the Pacific	Stockton
William Jessup University	Rocklin

4. Central Coast (4)

California Lutheran University	Thousand Oaks
Fielding Graduate University	Santa Barbara
Thomas Aquinas College	Santa Paula
Westmont College	Santa Barbara

5. Los Angeles/Kern (30)

American Academy of Dram. Arts L.A.	Hollywood
American Jewish University	Bel Air
Antioch University Los Angeles	Los Angeles
Art Center College of Design	Pasadena
Azusa Pacific University	Azusa
Biola University	La Mirada
California Institute of Technology	Pasadena
California Institute of the Arts	Valencia
Chicago School of Prof. Psychology	Los Angeles
Claremont Graduate University	Claremont
Claremont McKenna College	Claremont
Harvey Mudd College	Claremont
Keck Graduate University	Claremont
Loyola Marymount University	Los Angeles
Marymount College	Rancho Palos Verdes
Master's College, The	Santa Clarita
Mount St. Mary's College	Los Angeles
Occidental College	Los Angeles
Otis College of Art + Design	Los Angeles
Pacific Oaks College	Pasadena
Pepperdine University	Malibu
Pitzer College	Claremont
Pomona College	Claremont
Scripps College	Claremont
So. California Univ. of Health Sciences	Whittier
University of La Verne	La Verne
University of Southern California	Los Angeles
Western University of Health Sciences	Pomona
Whittier College	Whittier
Woodbury University	Burbank

6. Orange (7)

Brandman University	Irvine
Chapman University	Orange
Concordia University	Irvine
Hope International University	Fullerton
Laguna College of Art & Design	Laguna Beach
Soka University	Aliso Viejo
Vanguard University of Southern California	Costa Mesa

7. Riverside/San Bernardino (4)

California Baptist University	Riverside
La Sierra University	Riverside
Loma Linda University	Loma Linda
University of Redlands	Redlands

8. San Diego/Imperial (5)

Alliant International University	San Diego
National University	La Jolla
Point Loma Nazarene University	San Diego
San Diego Christian College	El Cajon
University of San Diego	San Diego

*See schools websites for satellite locations.

California Options Higher Education

Community College

4 Year Universities / Colleges



Community Colleges

CSU's

UC's

**Independent
Private Colleges**

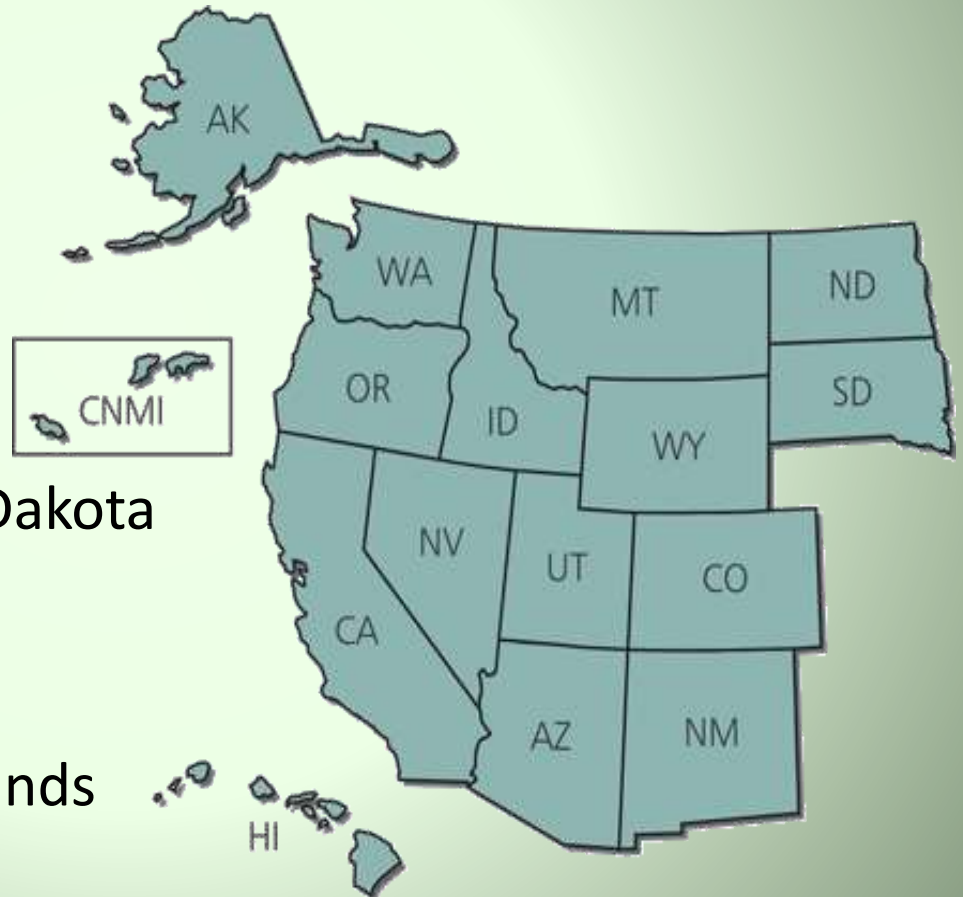
Out of State – 3400+ Choices!

- Out of State – 49 states & International Options
- Universities & Colleges from coast to coast (and beyond) are seeking students from California
- Private Schools do NOT charge OOS Tuition!!
- Some will freeze tuition for four years
- WUE – Western Undergraduate Exchange

WUE : Western Undergraduate Exchange

- 15 Western Participating States & 1 US Territory:

- Alaska Arizona
- California Colorado
- Hawaii Idaho
- Montana Nevada
- New Mexico
- North Dakota South Dakota
- Oregon Washington
- Utah Wyoming
- Northern Mariana Islands



WUE : Western Undergraduate Exchange (*WUE = pronounced Woo E*)

What is it?? Tuition Reduction !!

- Students in Western states **may** enroll in participating two-year and four-year **public** college programs at a reduced tuition level
- **up to 150%** of the institution's regular resident tuition
- **WUE tuition is considerably less than nonresident tuition**



Tuition Reduction??

OK ... WHAT DOES THAT MEAN???

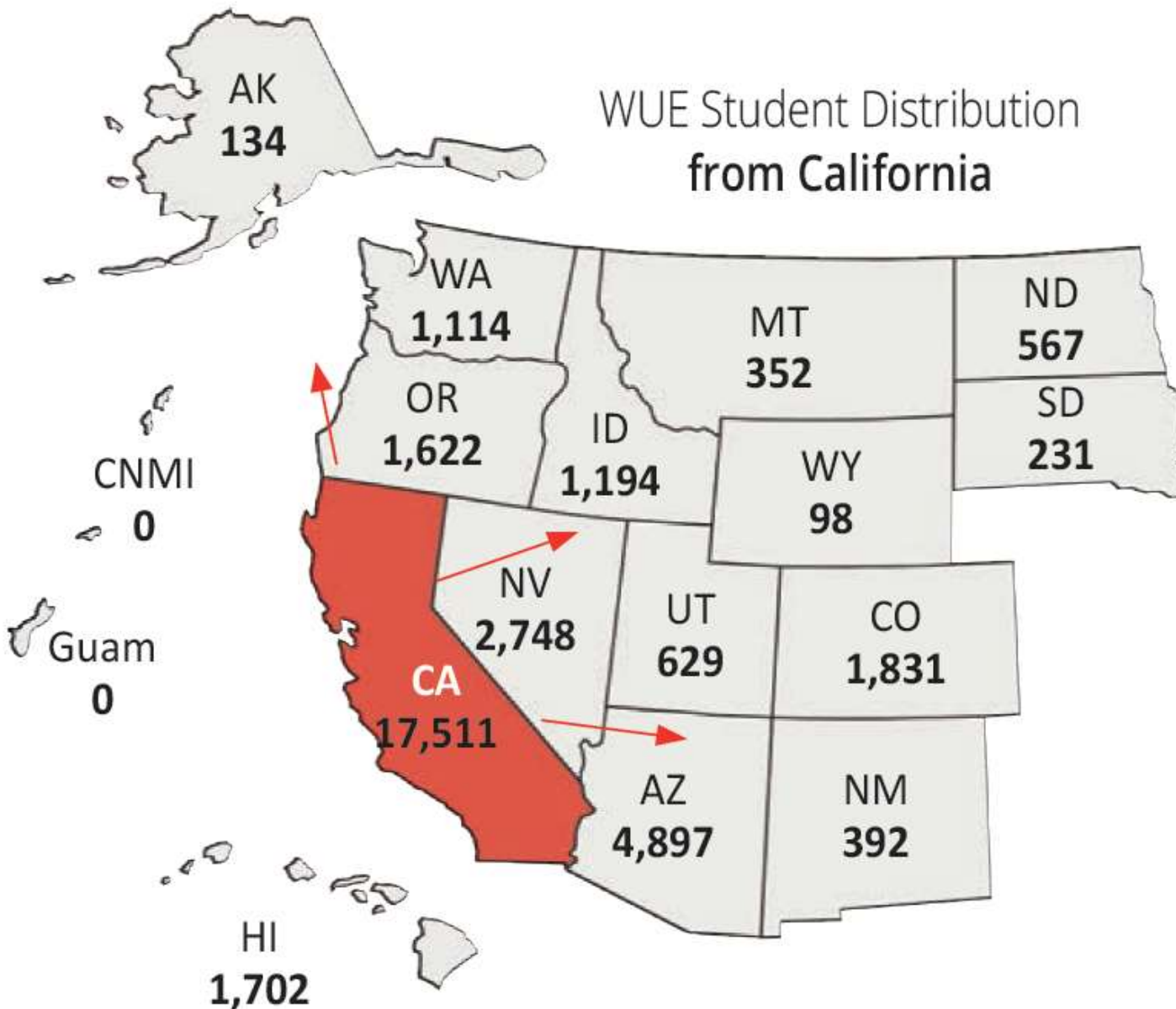
WUE Schools have 3 Tuition Rates!

Resident Tuition

Non-Resident Tuition

WUE Tuition

CALIFORNIA STUDENTS ON WUE



WUE : Western Undergraduate Exchange Plus Financial Aid & Scholarships

Resident Tuition	\$6,677
Non-Resident Tuition	\$22,307
WUE Tuition (1 ½ times Resident or less!)	\$10,000 (Save \$50,000 over 4 years!)
Financial Aid (Need based)	Must do the FAFSA
Merit Scholarship (Amount varies)	Will stack on top of WUE
WUE Tuition, Fin Aid & Merit Scholarship	\$BIG Money to pay for College

**OK there are 86 WUE 4-year Institutions
AND
Every one Sets their Own Criteria!**

So want to know how to get the Dough??

Be Admitted

Meet the Qualifications

Apply for the WUE (if necessary)

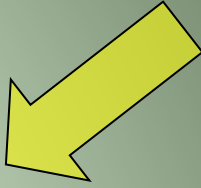
**OK there are 86 WUE 4-year Institutions
AND
Every one Sets their Own Criteria!**

Which Colleges have WUE??



www.wiche.edu/wue

Eligible vs. Competitive



ELIGIBLE

- Minimum A-G Completion
- Minimum GPA
- Easy 12th grade schedule w/ few A-G courses
- Few extracurricular or community activities

Does not mean that a student will be accepted to their 1st choice campus

COMPETITIVE

- Taking A-G courses beyond the minimum
- Higher GPA
- Competitive 12th grade schedule w/ A-G courses
- Several, recurring extracurricular or community activities

Better chance for students to be accepted to highly competitive or oversubscribed majors

Creating Options In Your College Search

Top Reasons Students Chose Their College

COLLEGE SEARCH

~~Google~~

Google Search

I'm Feeling Lucky

Question # 2

- **Top 5 reasons a student chooses a college:**

Creating Options In Your College Search

Top Reasons Students Chose Their College

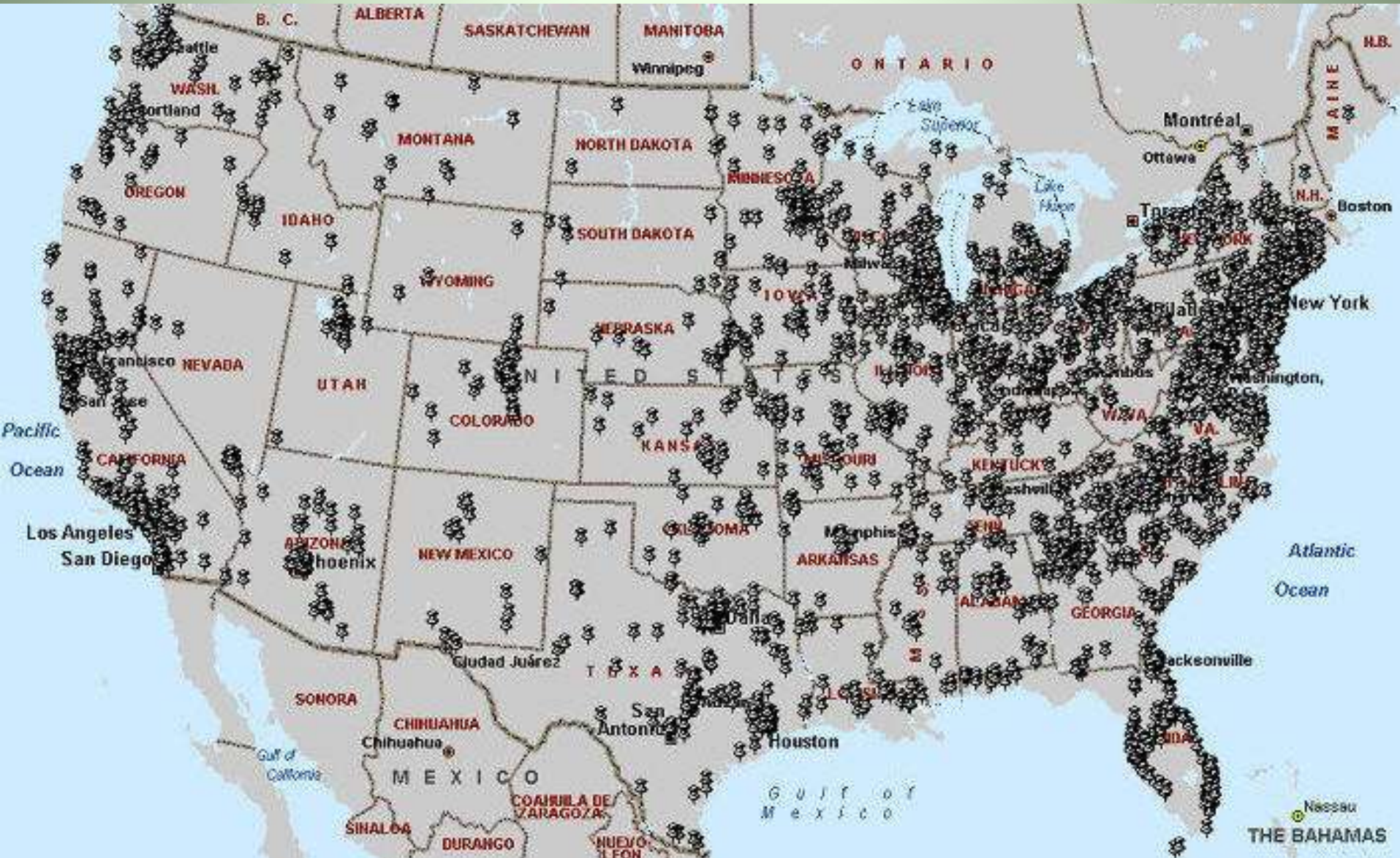
5) Location, Location, Location

Where do you want to live?

What do you like to do?

Spending Free Time!

3600 Choices & Options in America!



Creating Options In Your College Search

Top Reasons Students Chose Their College

5) Location, Location, Location

Metro

Urban

Suburban

Rural



Creating Options In Your College Search

Top Reasons Students Chose Their College

4) Size

Tiny

Small

Medium

Large and

GINORMOUS!



Creating Options In Your College Search

Top Reasons Students Chose Their College

3) Cost

It's more than just tuition!

Finish in 4 years?

Creating Options In Your College Search

Top Reasons Students Chose Their College

**2) I got accepted
You gotta get IN!
or you're OUT**



Creating Options In Your College Search

Top Reasons Students Chose Their College

- 5) Location, Location, Location**
- 4) Size of the student body**
- 3) Cost**
- 2) I got accepted**
- 1) It just felt right – FIT!!**

Financial Fit!!

- The 5 primary costs of going to college:



Creating Options In Your College Search

Costs for Students Going to College (COA = Cost of Attendance)

1) Tuition and Fees

Private –

No out of state difference

Public –

Resident / Non-resident
& Regional Reciprocity

Creating Options In Your College Search

Costs for Students Going to College (COA = Cost of Attendance)

2) Housing and Dining

Used to be 'Room & Board'

Now it's 'Glamorous & Gourmet'

Dorms replaced w Apartments & Suites

Meals – organic, vegetarian, vegan

Creating Options In Your College Search

Costs for Students Going to College (COA = Cost of Attendance)

3) Books and Supplies

E-books

Laptops

Mobile Phones

Tablets

Creating Options In Your College Search

Costs for Students Going to College (COA = Cost of Attendance)

4) Transportation

Planes

Trains

Automobiles

Parking



Creating Options In Your College Search

Costs for Students Going to College (COA = Cost of Attendance)

5) JJ & SB



Jamba Juice

\$tarBuck\$



Pizza ◆ Popcorn

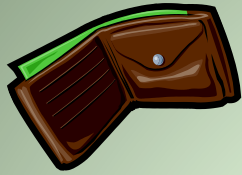
Personal Expenses

FUN!!

Creating Options In Your College Search


Costs for Students Going to College (COA = Cost of Attendance)

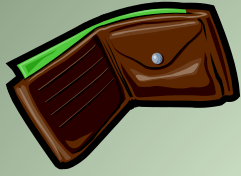
- 1) Tuition and Fees**
- 2) Housing & Dining**
- 3) Books & Supplies**
- 4) Transportation**
- 5) JJ & SB**



2020 Estimated Costs


California Living On-Campus

	CA Community College	California State University	University of California	California Private Colleges
Tuition and Fees	\$864	\$6,632	\$13,900	\$31,231
Housing and Dining	\$4,347	\$13,356	\$15,400	\$11,188
Books and Supplies	\$1,656	\$1,948	\$1,200	\$1,288
Personal Expenses and Transportation	\$4,185	\$2,903	\$4,200	\$2,609
TOTALS:	\$11,052	\$24,839	\$34,700	\$46,312



2020 Estimated Costs

Out of State Living On-Campus

	OOS Public University	OOS Private Colleges	University of California	California Private Colleges
Tuition and Fees	\$20,458	\$31,231	\$13,900	\$31,231
Housing and Dining	\$9,304	\$11,188	\$15,400	\$11,188
Books and Supplies	\$1,146	\$1,288	\$1,200	\$1,288
Personal Expenses and Transportation	\$2,742	\$2,609	\$4,200	\$2,609
TOTALS:	\$33,650	\$46,312	\$34,700	\$46,312

OMG

That's a lot of money!!

BLONDIE



© 2003 by King Features Syndicate, Inc. World Rights reserved.

1-3

www.blondie.com

YOUNG
AND
REBORN



How to Pay for College?

Financial Aid

How to Pay for College

Types of Financial Aid:

Need Based

Merit

Combo

i
believe
that every
Person
is Born with
Talent

~ MAYA ANGELOU

How to Pay for College

Financial Aid includes:

Scholarship

Grants

Loans

The J O B Program

How to Pay for College

Some Sources:

- 1) Student & Family**
- 2) Institutional Assistance**
- 3) Corporations & Foundations**
- 4) Government: State & Fed**

Financial Aid - Need Based

FAFSA:

www.fafsa.ed.gov

Do the FAFSA : Yes or No?

Federal Financial Aid?

State Financial Aid?

Institutional Financial Aid?



For priority apply [October 1, 2020](#) – Check with College!

Financial Aid - Need Based

FAFSA: Free Application for Federal Student Aid

www.fafsa.ed.gov

File ASAP!

Class of 2021

File in October 2020 !!



For priority apply - [October 1 - Check with College?](#)

Create Your FSA ID (Username and password)

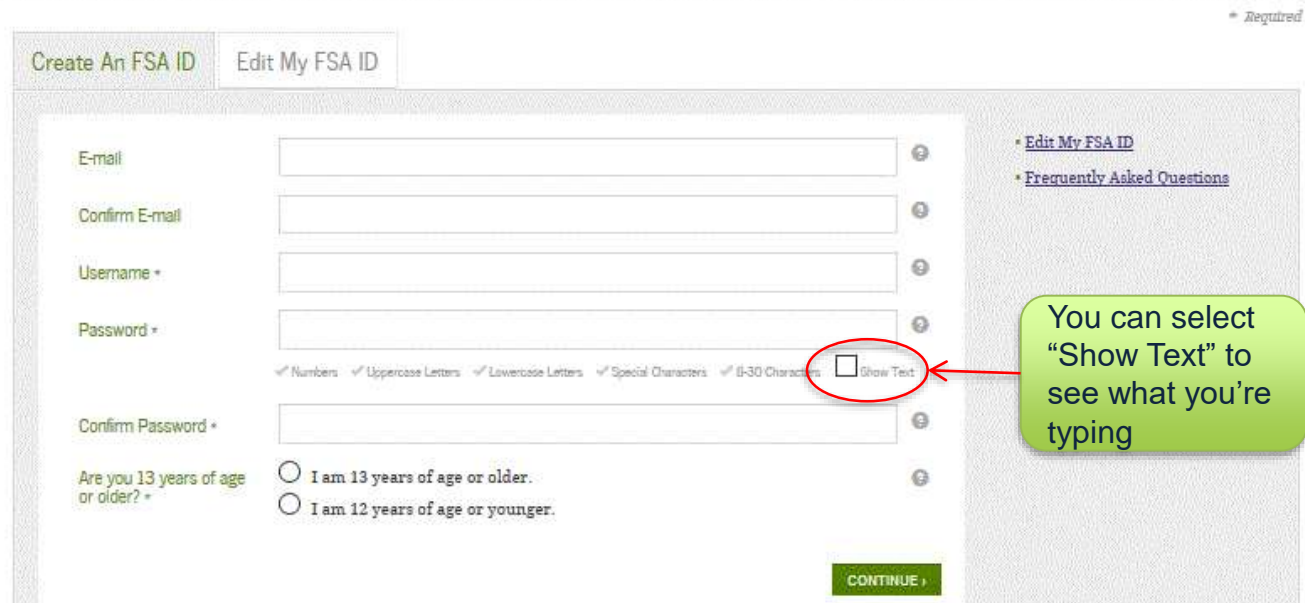
Create a New FSA ID

An FSA ID gives you access to Federal Student Aid's online systems and can serve as your legal signature.

Only create an FSA ID using your own personal information and for your own exclusive use. You are not authorized to create an FSA ID on behalf of someone else, including a family member. Misrepresentation of your identity to the federal government could result in criminal or civil penalties.

To create your own personal FSA ID, enter answers for the questions below and select CONTINUE.

Important: When you are done click the CANCEL button to clear your data, even if you did not finish creating your FSA ID. Just closing your browser window or going to another website may not be enough to prevent other people using this computer from seeing your information until the session expires.



The screenshot shows the 'Create An FSA ID' form. It includes fields for E-mail, Confirm E-mail, Username, Password, and Confirm Password. The Password field has a 'Show Text' checkbox next to it, which is circled in red. A green callout box with an arrow points to this checkbox, containing the text: 'You can select "Show Text" to see what you're typing'. Below the form are radio buttons for age selection and a 'CONTINUE' button. On the right side of the form, there are links for 'Edit My FSA ID' and 'Frequently Asked Questions'.

E-mail:

- Optional but **strongly** recommended
- Each FSA ID must have a **unique** e-mail address (you and your parent cannot use the same e-mail address)
- You must have access to this e-mail account

Username:

- Don't include personal info such as date of birth or name
- If you see a message "Username taken, create a different username" then someone has already used that username

Financial Aid - Need Based

FAFSA: Free Application for Federal Student Aid

www.fafsa.ed.gov

Fill out the form online

EFC (Expected Family Contribution)

Do it EVERY year! Up to 6 years!!

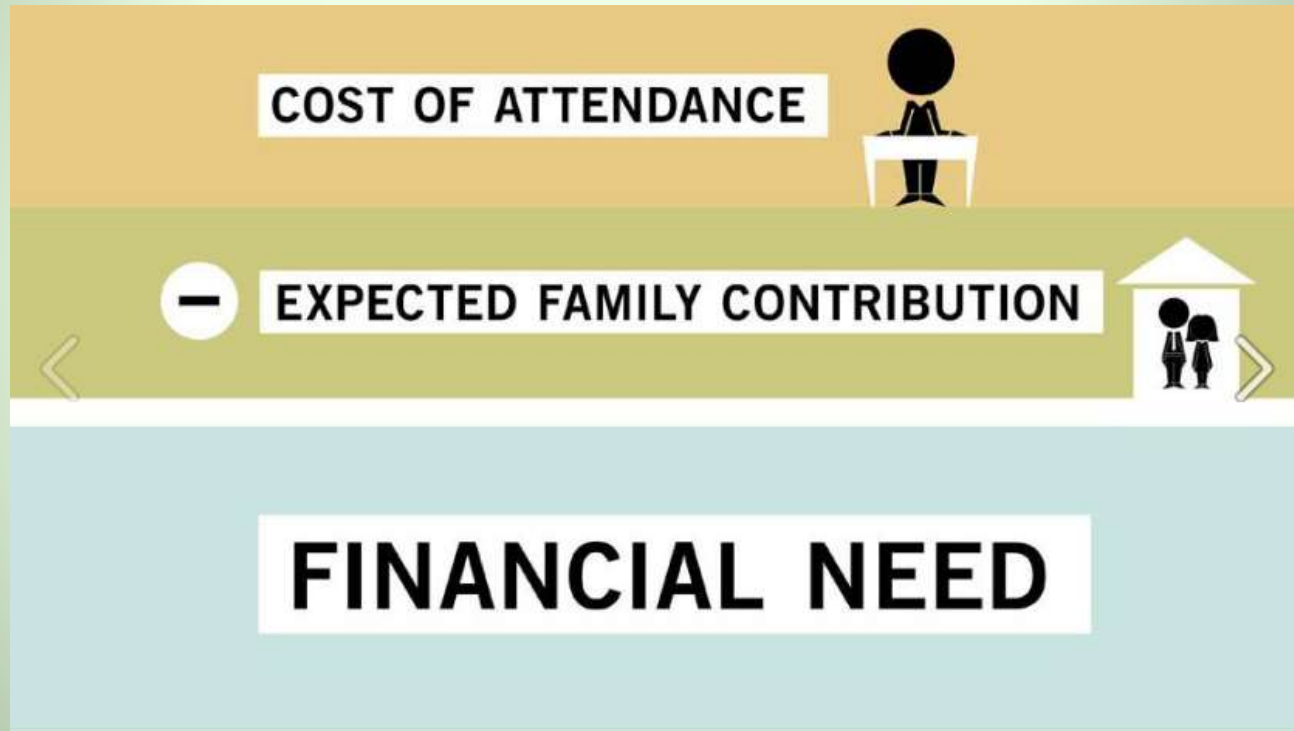


For priority apply - [October 1 - Check w College?](#)

Financial Aid - Need Based

FAFSA: Free Application for Federal Student Aid

www.fafsa.ed.gov



For priority apply - [October 1 - Check w College?](#)

Financial Aid - Need Based

FAFSA: Free Application for Federal Student Aid

www.fafsa.ed.gov



GRANTS

LOANS

WORKSTUDY



For priority apply [October 1, 2020](#) – Check w College?

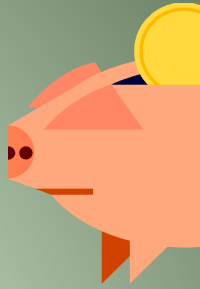
NUMBER TWO Rule re: Financial Aid

- Always, always, always apply for financial aid.
 - Doesn't matter if you think that you won't qualify.
 - Will need to file to qualify for non-need based federal loans.
 - Many schools will NOT consider you for merit or other scholarships unless you apply for federal financial aid.



Scholarships :

Merit / Need / Combo



- **APPLY! . . . APPLY! . . . APPLY!**

- Good Grades and Good SAT / ACT scores . . .
- There is a lot of money available that goes unclaimed

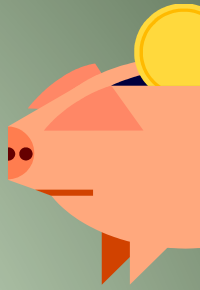
- Scholarship Tips:

1. Create a Resume
2. Get active in the community:
 1. Clubs
 2. Community Service
3. Document your community service
4. Preview – Write – Review your essays
5. Finish the application and turn it in on time



Scholarships :

Merit / Need / Combo



- **Always! . . . Always! . . . Always!**
- Good Grades and Good SAT / ACT scores . . .
- There is a lot of money available that goes unclaimed

- Scholarship Tips:

1. Create a Resume
2. Get active in the community:
 1. Clubs
 2. Community Service
3. Document your community service
4. Preview – Write – Review your essays
5. Finish the application and turn it in on time



Free Search on the Net

There are several online website that can assist you in finding scholarships:

 **CollegeBoard** www.bigfuture.collegeboard.org/scholarship-search

 **FastWeb!** www.fastweb.com

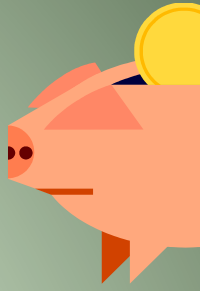
Scholarships for High School Juniors | Scholarships for High School Seniors

 **ScholarshipExperts.com** www.scholarshipexperts.com
Fast. Easy. Free.

 **Scholarships.com** www.scholarships.com
You Find Money. Colleges Find You.



Scholarships : Merit / Need / Combo



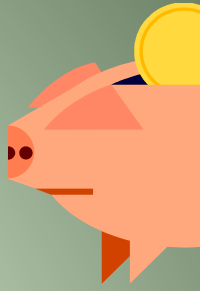
Many Websites & FREE Searches!!

<http://scholarship.unm.edu/scholarships/general.html>

Be Looking for Niche Scholarships!



Scholarships : Merit / Need / Combo



Many Websites & **FREE** Searches!!

Be Careful of SCAMS!



The Scholarship Process Tips & Tricks

Know When to Apply for Admission AND Scholarship!

Apply & submit all required documents for the application AND scholarship process by the priority application **deadline.**

Put in your **calendar** dates & deadlines for admission & scholarships

The Scholarship Process Tips & Tricks

Scholarships is there a separate process?

Does the college have a **separate application** process for scholarships?

Do you **need** to do anything else?

The Scholarship Process Tips & Tricks

If there is an application for scholarship...

Do you have to gain admission before applying for scholarships?

If you do not know the deadline – ask your admission counselor!

Apply and submit all required items
BEFORE the deadline

The Scholarship Process Tips & Tricks

What is being considered to gain a scholarship?

Are you evaluated by the same criteria for the admission & the scholarship process?

Do they super score & is the writing score required?

ACT / SAT – What is each college/ university doing?

Not everyone is handling this process the same

What GPA do they consider? Weighted? Unweighted?

9-11th grade? 12th grade?

The Scholarship Process Tips & Tricks

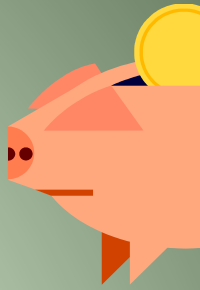
WHEN! I am awarded a scholarship

Check your personal email and the college email you are assigned for notifications

Typically all portals allow you to find your individual ID number you have been assigned

Scholarships :

Merit / Need / Combo



ROTC



Army

Air Force

Navy

Navy w/ Marine Option



URGENT

Spring 2020 Entrance Exam Dates



	Feb / March	April / May	June / July
 ACT Test	<u>February 08, 2020</u> Regular Registration by <u>January 10, 2020</u>	<u>April 04, 2020</u> Regular Registration by <u>Feb 28, 2020</u>	<u>June 13 & July 18</u> Regular Registration by <u>May 08 & June 19, 2020</u>
 SAT Tests	<u>March 14, 2020</u> Regular Registration by <u>February 14, 2020</u>	<u>May 02, 2020</u> Regular Registration by <u>April 03, 2020</u>	<u>June 06, 2020</u> Regular Registration by <u>May 08, 2020</u>

URGENT

Fall 2020 Entrance Exam Dates



	Aug / Sept	October	Nov / Dec
 ACT Test	<u>September 12, 2020</u> Regular Registration by <u>August 09, 2020</u>	<u>October 24, 2020</u> Regular Registration by <u>September 27, 2020</u>	<u>December 12, 2020</u> Regular Registration by <u>November 01, 2020</u>
 SAT Tests	<u>August 29, 2020</u> Regular Registration by <u>July 24, 2020</u>	<u>October 03, 2020</u> Regular Registration by <u>Sept 05, 2020</u>	<u>Nov 07 & Dec 05, 2020</u> Regular Registration by <u>Oct 02 & Nov 07, 2020</u>

Important Tips...

- Tour the campuses you are interested in.
- Begin compiling a list of scholarships
- Attend college fairs and parent nights
- Contact university representatives
- Keep choices open
- Take the SAT's/ACT early
- Meet deadlines
- Create a professional email for college purposes

TALK TO YOUR PARENTS / GUARDIANS ABOUT EVERYTHING!



BIG College Fair!!

April 29, 2020

6:00pm – 8:30pm

Pasadena Convention Center

The Scholarship Process Tips & Tricks

Final Advice...

- Be timely
- Be grammatically correct
- Be kind and gracious
- Utilize your admissions counselors



You'll always remember!



Dickinson





Sara Buswell

Associate Director of Admissions



Population of **Pullman**: 33,700

Total **WSU Students**: 21,022

Total **Undergraduates**: 18,355

Nearly **2/3** of Pullman's population consists of students

Guaranteed **First Year Housing**: **17 Halls**



200+ fields of study

Tier-1/R1 research university

Undergraduate research opportunities

560+ study abroad programs on 7 continents

Pac-12 athletics

60+ fraternities & sororities

400+ clubs



Cougar Award



- \$7,000 per year
- 3.0-3.39 unweighted HS GPA

Distinguished Cougar Award (WUE)

- \$11,000 per year
- 3.4+ unweighted HS GPA





Chris O'Sullivan

Regional Admission Counselor







Gary K Bednorz

'GaryB'

UNM Student Recruitment Specialist



University of New Mexico



University Not close to Mom
Albuquerque
Flat and HOT – we're NOT!!

University
Next to
Mountains



Usually Not Much
In Albuquerque
A lot in the Sandia Ski Resort

University of New Mexico

Over 200 Academic Programs

University of **N**umerous **M**ajors

Architecture, Athletic Training,

Business - Marketing, Engineering,

Biology, Chemistry, BioChem, PreMed,

Sociology, History, Psychology,

Film, Music, Fine Arts & More

University of New Mexico

Scholarships

GPA = 3.0+ you're eligible !!

WUE : Western Undergraduate Exchange

GPA @ 3.0+ and SAT 990 or ACT 19

Total value over 4 years: \$45,000+

GPA @ 3.0+ and SAT 1100 or ACT 22

Total value over 4 years: \$60,000+

Amigo Scholarship – friendliest program ever!

3.9+ GPA or National Merit Scholar

Potential full ride scholarship!!

University of New Mexico

Apply Now Online

No Essay!!

No Personal Statement!!

No Letters of Recommendation!

Rolling Admission

Two Weeks from App to Admit!

Admitted NOT Committed ...

Application Fee Waiver for California Students

Apply online ~ click pay later ~ e-mail **GaryB@unm.edu**

You have **UNM : Until Next May** to decide



UNM



Unlimited **N**umber of **M**eanings!



Ask Questions?!

& Follow Directions!