



**Share Learn Connect**  
**University of Redlands**  
**March 06, 2019**

**Thank You!!**



# Health Sciences options Galore : Let's Explore

# Today You'll Meet:



## Michael Taylor

Associate Director of Admissions



**Email :: [MTaylor@HPU.edu](mailto:MTaylor@HPU.edu)**

**Thanks for Coming to the Show!**

# Today You'll Meet:



## Gary B

Admissions Counselor



**Email :: GaryB@UNM.edu**

**Thanks for Coming to the Show!**

# Every College





# What is RACC?

[www.regionaladmissions.com](http://www.regionaladmissions.com)



The Regional Admission Counselors of California (**RACC**) is an organization comprised of **160+ admission professionals**, from over **116 institutions**, who work with students and counselors throughout California while representing universities and colleges outside of California. *Est. 1989*

## We live here in California!

# Health Sciences: Options Galore - Let's Explore

- ▶ Many students when asked about intended major / academic area of interest frequently say
  - ▶ **Nursing**
  - ▶ **Kinesiology**
  - ▶ **Pre-med / Medicine**
- ▶ Health Sciences is rarely said!!

This informative and entertaining presentation will discuss pathways to a degree in these three!!

# **Health Sciences: Options Galore - Let's Explore**

Additionally, let's explore other options leading to 'medical' careers in:

- ▶ **Diagnosing**
- ▶ **Therapeutic**
  - ▶ **Caring**
  - ▶ **Research**
- ▶ **Support fields**





# **PATHWAYS TO NURSING:**

**AN OVERVIEW FOR  
HIGH SCHOOL STUDENTS**

# Can you identify the nurse?



# Correct – all are nurses!

**Nurse  
Case  
Manager**



**Nurse  
Policy  
Maker**



**Nurse  
Anesthetist**



**Nurse  
Administrator**



**Nurse  
Researcher**



**Nurse  
Educator**



# Goals and Outcomes

- Status of Nursing today
- Different Routes
- Comparative Analysis of
  - UC - CSU - Private Schools – Out of State
- Advice
- Being a Nursing student
- Options



# PATHWAYS FOR INCOMING FRESHMAN

## DIRECT ENTRY

- Automatically admitted into clinicals part of program=avoiding stress of applying into higher division
- VERY COMPETITIVE
- Typically must maintain academic performance to maintain your spot
- Not as many programs out West

## PRE-NURSING

- Admitted into lower division coursework=less competitive for incoming freshman
- Must apply into the upper division clinical work, similar to applying to college all over again
- Not guaranteed a spot and must compete with other applicants



# How to be competitive for Direct Admit Nursing...

- Strong grades and test scores at the top of their senior class.
- Rigorous high school curriculum. Including anatomy & physiology, biology, chemistry, physics and statistics.
- AP exams & SAT subject tests are typically optional, but highly encouraged.
- Experience related to healthcare that is heavily noted on activities list.
- Strong reason for why a student wants to be a nurse.
- Ability to articulate how they are prepared for rigorous major of nursing and career as a nurse.

# PATHWAYS FOR INCOMING FRESHMAN

## Associate Degree in Nursing

- 2-3 years
- Pass the NCLEX-RN National Licensing Exam
- Allows student to begin working in field sooner
- Good for students that are not 100% sure they want nursing as career
- Can be harder to move up within the field

**Average Salary in CA  
= \$76,731**

**ADN to BSN  
Bridge**

## Bachelor of Science in Nursing

- 4 years
- Pass the NCLEX-RN National Licensing Exam
- Extensive clinical practicums
- Allows for more advanced nursing roles, including nurse practitioner, nurse midwife or clinical nurse leader – all of which require an MSN
- Trend toward the BSN as a the standard Pre-Licensing degree

**Average Salary in CA  
= \$94,300**

# UC NURSING PROGRAMS

- **VERY COMPETITIVE**
  - UCI 3.6% admit rate, UCLA 2% admit rate
  - Both schools only look at the supplemental applications
- **Supplemental application in addition to UC application**
  - Letters of recommendation, more details regarding medical experience, additional essay to complete
  - Important to demonstrate knowledge of the profession



# California State University Nursing Programs

- **Solely based on the grades and test scores**
  - What is the applicant's Academic Index?
  - Focus is on test scores and academic record
- **Blend of Direct Entry and Pre-Nursing programs**
  - Direct Entry Cal States: CS Fullerton, San Diego State
  - Pre Nursing Cal States: CSU Chico, CSU Bakersfield, CSU Channel Islands, CSU East Bay, Fresno State, CSU Long Beach, Cal State LA, Sacramento State, CSU San Bernardino, SF State, San Jose State, CSU San Marcos, Sonoma State, CSU Stanislaus
  - Northridge does pre nursing at local CC then student transfers to CSUN for clinicals / upper division work



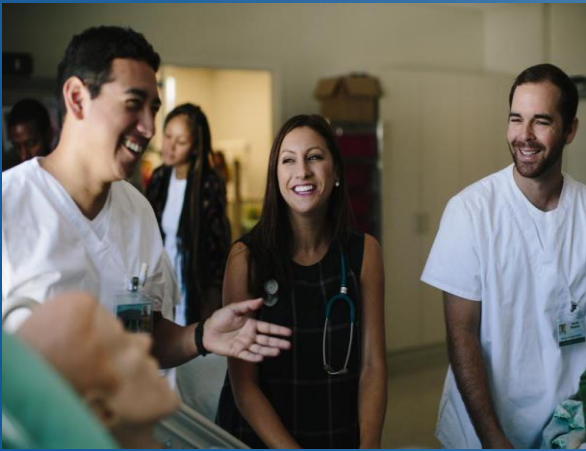


	Fall 2018	Fall 2017	Fall 2016	Fall 2015	Fall 2014
Number of Applicants	5,646	4,831	4,396	3,948	3,880
Number of Students Offered Admission	*335	*356	*352	*365	*349
Average Admitted GPA (Weighted)	4.04	4.04	3.94	3.93	3.91
Average Admitted SAT Score	Redesigned Version 1,358.6	Redesigned Version 1,323	Former Version 1,245	Former Version 1,227	Former Version 1,212
Average SAT Math	696	665	639	644	632
Average SAT Reading	663	652	606	583	579
Average ACT Score	28.1	28.3	27.9	27	26.5
Average Eligibility Index	4,593.1	4,525.5	4,427	4,384.7	4,353

## Incoming First-Time Freshmen Academic Profile

\*The School of Nursing aims to have 120 Freshmen attend each Fall. The Office of Admissions offers admission to approximately 320- 350 students to achieve the target enrollment of 120 students.

# Independent California Universities NURSING PROGRAMS



- **Common Traits of Private Schools in CA**
  - Smaller class sizes and environment
  - Highly interactive classes
  - Personalized education
  - Easier to attain 4 yr. graduation rate
- **Direct Entry:**
  - University of San Francisco
  - Dominican University
  - Point Loma Nazarene University
  - Azusa Pacific University
- **Pre-Nursing Programs:**
  - Mount Saint Mary's University,
  - Biola University
  - California Baptist University



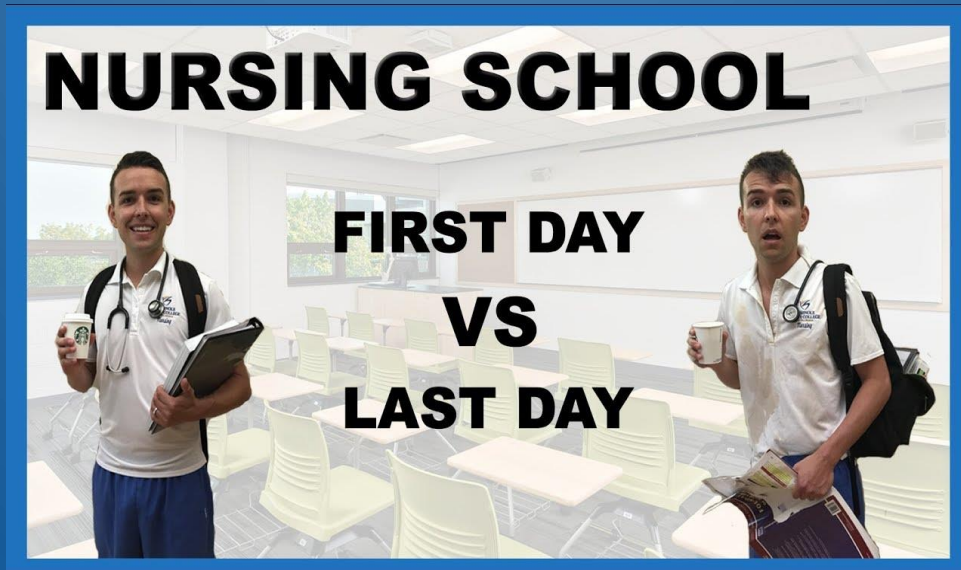
# TIPS FOR PREPARING TO APPLY

- **Do your research**
- **Classes to consider taking to stand out**
  - 4 years science
    - Biology
    - Chemistry
    - Physics
  - 4 years math
  - ROP or other medical exploration classes
  - Challenging coursework (honors, AP or IB)
- **Experience in the medical field**



# HELPFUL QUESTIONS FOR STUDENTS TO ASK

- Average Academic Profile for Nursing Program
- Direct Entry vs. Pre-Nursing
- Clinical Experiences
- Admission process for Nursing
- Pass score on the NCLEX exam



# SO YOU'RE IN! HERE'S WHAT YOU SIGNED UP FOR

- GPA and other requirements to stay in program
- Social life
- Test heavy profession
- What does this profession entail?



# Nursing Curriculum

## FRESHMAN YEAR (32 Credit Hours)

Prerequisite Semester 1	Credits	Prerequisite Semester 2	Credits
English - Accelerated Composition	3	English - Composition III	3
Biology - Biology for Health Sciences/Lab	4	Chemistry - Elements of General Chemistry/Lab	4
UNM Core Area 4, 5, 6 or 7	3	Statistics- Introduction to Statistics	3
Psychology - General Psychology	3	Nutrition - Human Nutrition	3
Math prerequisite as needed for Chemistry and/or Statistics	3	(N) Growth & Development	3
Total Credit Hours	16	Total Credit Hours	16

## SOPHOMORE YEAR (32 Credit Hours)

Prerequisite Semester 3	Credits	NURSING LEVEL 1	Credits
Biology - Health Sciences Microbiology/Lab	4	(N) Pathophysiology II	3
Biology - Anatomy and Physiology I	3	Biology - Anatomy and Physiology II	3
(N) Pathophysiology I	3	(N) Intro to Nursing Concepts	3
UNM Core Area 4, 5, 6 or 7	3	(N) Principles of Nursing Practice	4
UNM Core Area 4, 5, 6 or 7	3	(N) Evidence-Based Practice	3
Total Credit Hours	16	Total Credit Hours	16

# Nursing Curriculum

## JUNIOR YEAR (32 Credit Hours)

<b>NURSING LEVEL 2</b>	<b>Credits</b>	<b>NURSING LEVEL 3</b>	<b>Credits</b>
(N) Nursing Pharmacology	3	Approved Upper Division Nursing Elective or Nursing Honors	3
(N) Health and Illness Concepts I	3	(N) Care of Patients with Chronic Conditions	4
(N) Health Care Participant	3	(N) Health & Illness Concepts II	3
(N) Assessment & Health Promotion	4	(N) Professional Nursing Concepts I	3
UNM Core Area 4, 5, 6 or 7	3	UNM Core Area 4, 5, 6 or 7	3
<b>Total Credit Hours</b>	<b>16</b>	<b>Total Credit Hours</b>	<b>16</b>

## SENIOR YEAR (32 Credit Hours)

<b>NURSING LEVEL 4</b>	<b>Credits</b>	<b>NURSING LEVEL 5</b>	<b>Credits</b>
(N) Clinical Intensive I	4	(N) Clinical Intensive III	4
(N) Clinical Intensive II	4	(N) Capstone Practicum	4
(N) Health & Illness Concepts III	4	(N) Concept Synthesis	3
UNM Core Area 1 Additional Writing and Speaking	3	(N) Professional Nursing Concepts II	3
Approved Upper Division Nursing Elective or Nursing Honors	3		
<b>Total Credit Hours</b>	<b>18</b>	<b>Total Credit Hours</b>	<b>14</b>

# OTHER PATHWAYS TO CONSIDER

- **Out of State programs**
- **Transfer Route**
  - **Good route for students that aren't as competitive as a first-year student or still need to explore nursing field before committing.**
- **Master's Programs for Non-BSN students**

Nursing Programs by Region/Type in US			
	ADN	BSN	MSN
Midwest	269	209	146
North Atlantic	161	147	132
South	481	246	156
West	236	94	70



# WUE : Western Undergraduate Exchange

## What is it?? Tuition Reduction !!

Students in Western states **may** enroll in participating two-year and four-year **public** college programs at a reduced tuition level

**up to** 150% of the institution's regular resident tuition

In all cases, **WUE** tuition is considerably less than nonresident tuition



# WUE : Western Undergraduate Exchange

**Some Colleges EXCLUDE  
The Nursing Major!!**



So you want to be a

**Kinesiologist**



**Kinesiology ...**

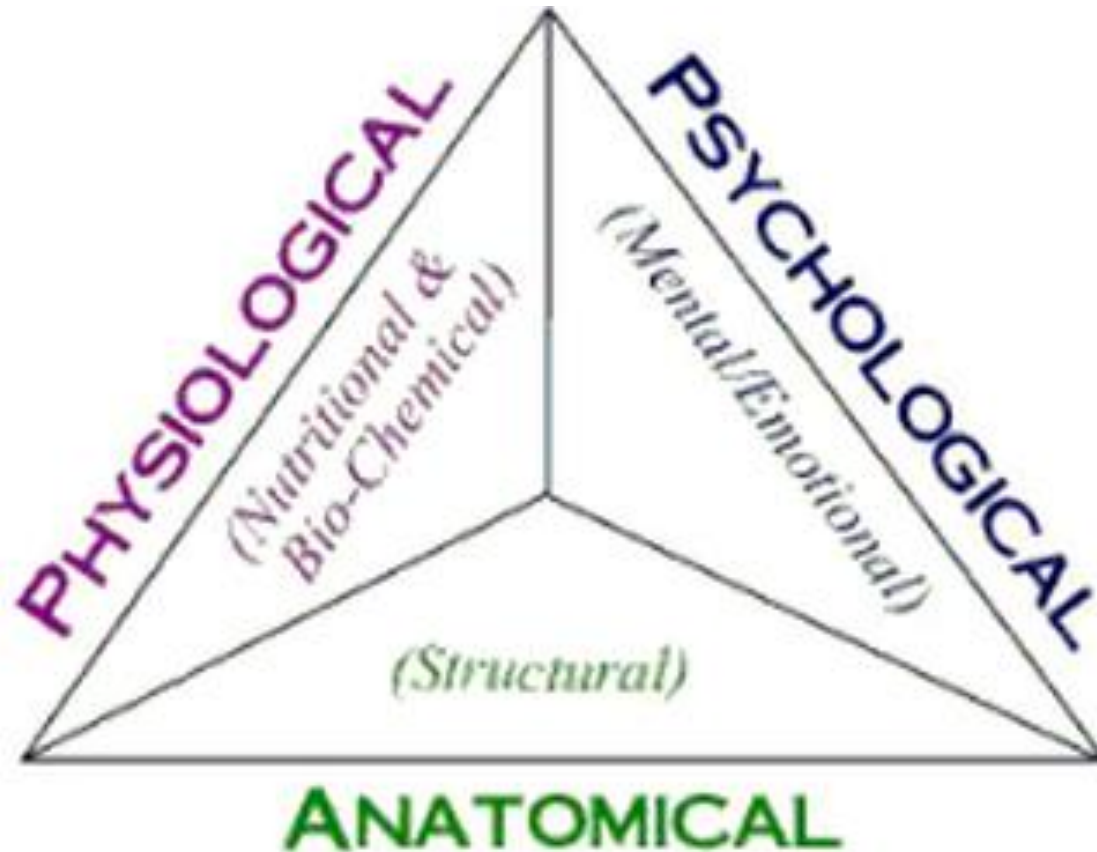
the study of the mechanics of body movements

# Kinesiology



Kinesiology is the science of human movement, applying the latest evidenced-based research to improve function, health and wellness of people in all settings and populations. -OKA

# Body + Mind = Health



# Athletic Training Exercise Science

- Baccalaureate programs may not admit, enroll, or matriculate students into the athletic training program after the start of the **Fall term 2022**



- Athletic Training is moving to a Masters Degree.



# Physical Therapy (DPT)



# Occupational Therapy



# Occupational Therapy

- Physical
- Emotional
- Behavioral
- ALL

# Occupational Therapy

- An occupational therapist is involved in helping people learn or relearn the skills necessary to carry out the daily occupations of self-care, work/productivity and play/leisure that they need or want to do.
- Occupational therapists work with people of all ages who have physical disabilities, emotional or behavioral problems, developmental delays or other disabilities.

**Why do high school students say they want to study “medicine”?**

# “Medicine” to high school students





# College Students Studying Pre-Med





# Let's Talk Medical School

- According to the Association of American Medical Colleges,  
**53,042 prospective students applied** to medical school in the 2016-2017 cycle, and a mere  
**21,030 students matriculated** into U.S. programs.
- **39.6%** of students who applied to medical school, attended medical school.

# Let's Talk Medical School

- 4 year graduation rate from medical school is about 82%.
- 4 years undergrad, 4 years medical school and 3-7 years residency to become a medical doctor.

# More Medical School Talk!

## Admission Requirements for Medical School

Medical school admission requirements vary from school to school

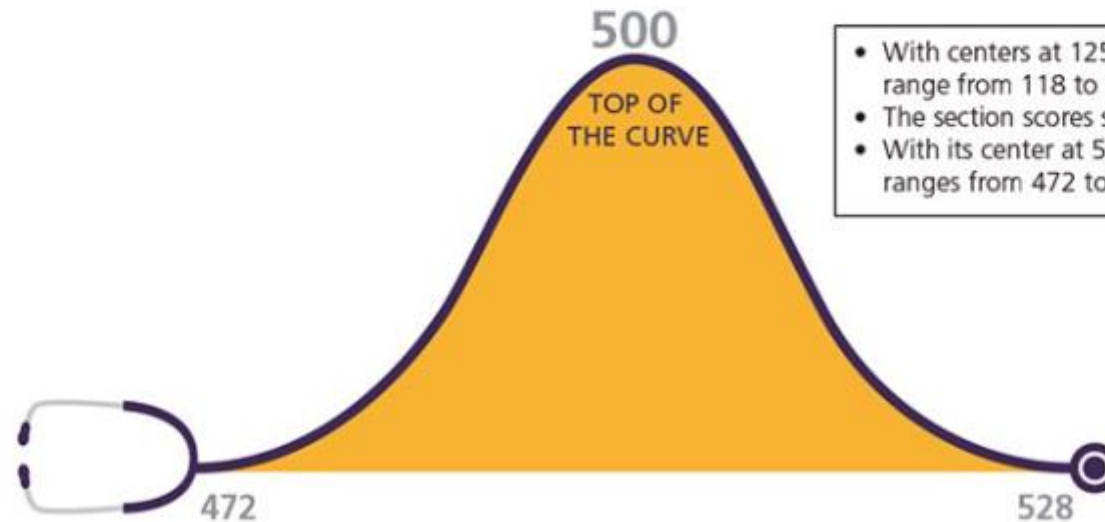
In general, before applying to medical school, students should complete the Medical College Admission Test<sup>®</sup> (MCAT<sup>®</sup>), and demonstrate that they can handle rigorous coursework.

# MCAT by the Numbers!

MCAT2015 has four test sections:



## MCAT2015 Total Score



- With centers at 125, section scores range from 118 to 132.
- The section scores sum to the total score.
- With its center at 500, the total score ranges from 472 to 528.

# Let's Talk Medical School

- The average MCAT score for applicants was 501.8, while the average score for matriculating students raised the bar even higher, to 508.7.

# “Does it matter what my major is if I want to go to medical school?”

- The answer in large part is no.
- Medical schools want applicants who are smart, hard-working and well-rounded.
- In addition, medical school requirements state that there are a set of courses which must be completed prior to applying to medical school; these include general biology, general chemistry, organic chemistry, physics, and typically at least 1-2 semesters in English.
- Aside from those courses which are required for med school, you can major in anything you want.
- The majority (75%) of medical school **matriculants** major in the biological, physical and social sciences.
- This leaves 25% of students **accepted** to medical school that have majors in other disciplines.

# “Does it matter what my major is if I want to go to medical school?”

- The answer in large part is no.
- Medical schools want applicants who are smart, hard-working and well-rounded.
- In addition, medical school requirements state that there are a set of courses which must be completed prior to applying to medical school; these include general biology, general chemistry, organic chemistry, physics, and typically at least 1-2 semesters in English.
- Aside from those courses which are required for med school, you can major in anything you want.
- The majority (75%) of medical school **matriculants** major in the biological, physical and social sciences.
- This leaves 25% of students **accepted** to medical school that have majors in other disciplines.



# Ready for Medical School??

## BASIC SUBJECT REQUIREMENTS

- **Biology (with Lab)**
- **General Chemistry (with Lab)**
- **Organic Chemistry (with Lab)**
- **Physics (with Lab)**
- **English**
- **Math**

## REQUIRED OR RECOMMENDED SUBJECTS

- **Biochemistry**
- **Calculus**
- **Psychology**
- **Sociology**
- **Statistics/Biostatistics**
- **Genetics**
- **Humanities**
- **Behavioral Sciences**
- **Social sciences**

# Let's Talk Medical School, Again

- Advanced Placement (AP) and International Baccalaureate credits acceptable to the student's undergraduate college **may be** used to satisfy the prerequisites.
- Online courses are generally **not accepted** for prerequisite course work.
- Typically, extension or evening courses taken in fulfillment of premedical course requirements are **not acceptable** unless they are identical to courses offered in the college's regular academic program.
- Medical School admission is no longer just about all about test score and GPA ... BUT those are important!!

**What is / Define  
Health Sciences?**

# **Health Sciences**

is a multidisciplinary field.  
actively combines bio-  
medical, psycho-social,  
organizational and societal  
aspects of health, disease  
and health care.

# Health Sciences

**Are...**

**Physical Health**

**Mental Health**

**Both!**

**More?**

# Employment Outlook

Health Science is the largest and fastest growing industry in the United States.

The health care industry employs over **10 million** workers in more than **200 careers**



# 14 of the Top 20 Fastest Growing Professions are in Healthcare

- Home health aides
- Medical assistants
- Physician's assistants
- PT assistants
- Dental hygienists
- Dental assistants
- Personal and home care aides
- Physical therapists
- Vet techs
- Diagnostics medical sonographers
- PT aides
- OT assistants
- Medical scientists
- Occupational therapists

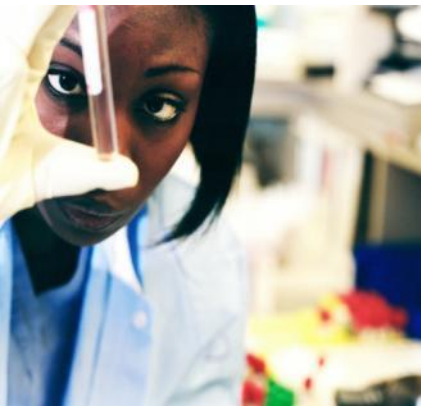


# Health Sciences Pathways

- **Diagnostic Services**
- **Therapeutic Services**
- **Health Informatics**
- **Supportive Services**
- **Biotechnology Research & Development**

# Diagnostic Services

Careers in diagnostic services use tests and evaluations that aid in the detection, diagnosis and treatment of diseases, injuries or physical conditions.



# DIAGNOSTIC SERVICES PROFESSIONS

- Blood Bank Technologist
- Cardiovascular Technologist
- Clinical Lab Technician
- CT Technologist
- Cytogenetic Technologist
- Cytotechnologist
- Diagnostic Medical Sonographers
- ECG Technician
- EEG Technologist
- Exercise Physiologist
- Geneticist
- Histotechnician
- Histotechnologist
- MRI Technologist
- Mammographer
- Medical Technologist/ Clinical Laboratory Scientist
- Nuclear Medicine Technologist
- Nutritionist
- Pathologist
- Pathology Assistant
- Phlebotomist
- PET Technologist
- Radiologic Technologist/ Radiographer
- Radiologist

# Therapeutic Services



Careers in therapeutic services are primarily focused on:

- **changing the health status of the patient over time.**
- Health professionals work directly with patients and may provide:
  - **care, treatment, counseling** and/or **health education.**



# THERAPEUTIC SERVICES PROFESSIONS

- Acupuncturist/ Accupressurist
- Allopathic Physician
- Anesthesiologist Asst.
- Art/Music/Dance Therapist
- Athletic Trainer
- Audiologist
- CNA/LPN/RN
- Chiropractor
- Dental Asst./ Hygienist
- Dental Lab Tech
- Dentist
- Dietician
- Dietetic Tech/Asst.
- Dosimetrist
- EMT/Paramedic
- Exercise Physiologist
- Home Health Aide
- Massage Therapist
- Medical Assistant
- Mortician
- Occupational Therapist/ OT Asst.
- Ophthalmic Medical Personnel
- Optometrist
- Orthodontist
- Orthotist/ Prothetist
- Pharmacist/ Pharmacy Tech
- Physical Therapist/ PT Assistant
- Physician (MD/OD)
- Physician's Assistant
- Psychologist
- Recreation Therapist
- Rehabilitation Counselors
- Respiratory Therapist
- Social Worker
- Speech Language Pathologist
- Surgical Technician
- Therapist (Art, Dance/Movement, Drama, Horticulture, Music)
- Veterinarian/ Vet Tech

# Health Informatics



The health informatics pathway offers a wide range of career opportunities. Careers range from health care administrators who manage health care agencies to individuals responsible for managing patient data, financial information and computer application related to health care processes and procedures.

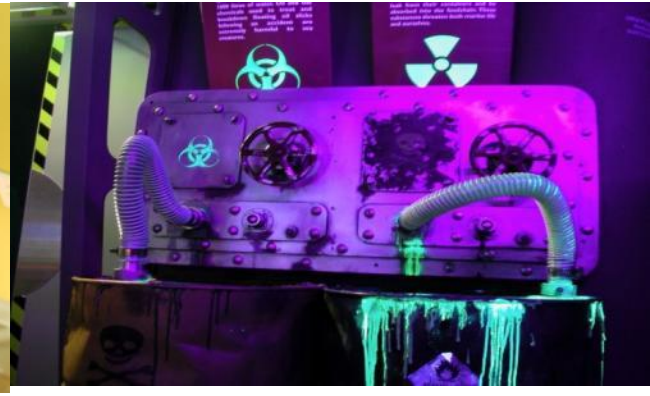
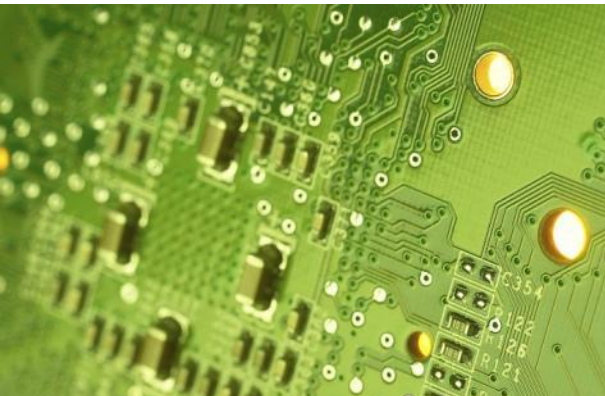
# HEALTH INFORMATICS PROFESSIONS

- Admitting Clerk
- Applied Researcher
- Biophotographer
- Community Services Specialist
- Data Analyst
- Epidemiologist
- Ethicist
- Health Educator
- Health Informatics Coder
- Health Information Services
- Healthcare Administrator
- Medical Assistant
- Medical Biller
- Medical Illustrator
- Medical Information Technologist
- Medical Librarian/Cybrarian
- Patient Advocate
- Patient Financial Services
- Public Health Educator
- Reimbursement Specialist
- Risk Management
- Social Worker
- Transcriptionist
- Unit Coordinator
- Utilization Manager



# Support Services

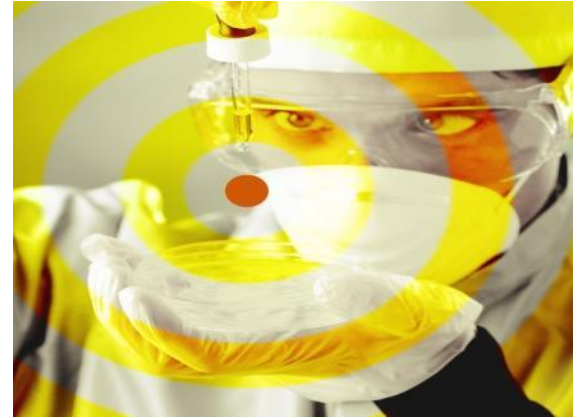
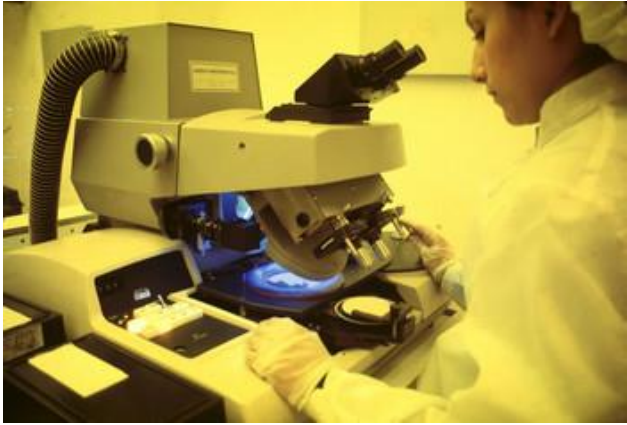
Careers in the support services provide a therapeutic environment for the delivery of health care. Career opportunities range from entry level to management level, including technical and professional careers.



# SUPPORT SERVICES PROFESSIONS

- Biomedical / Clinical Engineer
- Biomedical / Clinical Technician
- Central Services
- Environmental Health and Safety
- Environmental Services
- Facilities Manager
- Food Service
- Hospital Maintenance Engineer
- Industrial Hygienist
- Materials Management
- Transport Technician

# Biotechnology Research and Development



Careers in the biotechnology research and development pathway involve bioscience research and development as it applies to human health. These are scientists who may study diseases to discover new treatments, invent medical devices or improve the accuracy of diagnostic tests.

# PROFESSIONS IN BIOTECHNOLOGY RESEARCH AND DEVELOPMENT

- Biochemist
- Bioinformatics Associate
- Bioinformatics Scientist
- Bioinformatics Specialist
- Biomedical Chemist
- Biostatistician
- Cell Biologist
- Clinical Trials Research Associate
- Clinical Trials Research Coordinator
- Geneticist
- Lab Assistant - Genetics
- Lab Technician
- Microbiologist
- Molecular Biologist
- Pharmaceutical Scientist
- Quality Assurance Technician
- Quality Control Technician
- Regulatory Affairs Specialist
- Research Assistant
- Research Associate
- Research Scientist
- Toxicologist

# Undergrad Research Opportunities!



THE UNIVERSITY OF  
NEW MEXICO

## DEPARTMENT OF BIOLOGY AT UNM

 Search

- Home
- About UNM Biology ▶
- Contact Us
- Department Directories ▶
- News & Events ▶
- Seminar Schedules

### Faculty By Research Area

[Animal Ecology](#) | [Aquatic Ecology](#) | [Cell Biology](#) | [Comparative Biology](#) | [Computational Biology & Genomics](#) | [Conservation Biology](#) | [Developmental Biology](#) | [Evolutionary Biology](#) | [Genetics](#) | [Global Change Biology](#) | [Historic Ecology](#) | [Immunology](#) | [Invertebrate Biology](#) | [Marine Ecology](#) | [Mathematical Biology](#) | [Microbial Ecology](#) | [Microbial Pathogenesis](#) | [Microbiology](#) | [Molecular Biology](#) | [Molecular Evolution](#) | [Neurobiology](#) | [Paleoecology](#) | [Parasitology](#) | [Physiological Ecology](#) | [Plant Biology](#) | [Population Genetics & Phylogenetics](#) | [Riparian Ecology](#) | [Stem Cell Biology](#) | [Systematics/Phylogenetics](#) | [Terrestrial Ecology](#) | [Theoretical Biology](#) | [Vertebrate Biology](#)



# Undergrad Research Opportunities!



THE UNIVERSITY of  
NEW MEXICO

Department of Biology, MSC03 2020  
University of New Mexico, Albuquerque, NM 87131

September 3, 2014

Mr. Tyler Mendes  
UNM SRC 171  
2700 Campus Blvd. NE  
Albuquerque, NM 87106-8000

Dear Mr. Mendes,

Congratulations! You have been selected to participate in the MARC-U-STAR Program at the University of New Mexico beginning September 1, 2014. If you choose to join MARC, you will be beginning the next chapter of your career in research with at least four other students, your 2014-2015 cohort!

The MARC program is intended to be a 21-24 month program. However, we can only guarantee funding for the first year, starting June 1, 2014 and ending May 31, 2015. If NIH continues to provide funding and you continue to meet program goals, the second year of funding will begin on June 1, 2015 and end on May 31, 2016 or at the time of your graduation, whichever comes first.

It is the goal of the MARC Program to see you complete your undergraduate work successfully, apply to graduate school, be prepared to succeed in graduate school and have a research career. These goals are challenging, to say the least and we provide a number of resources to help you succeed. Due to the high standards of the MARC Program, the challenges of undergraduate matriculation, and the regulations of our funding agency, you will be expected to meet a series of requirements. If you feel you are having difficulty meeting any of these requirements, you must request exceptions from the MARC Program Director. Outlined below are several of the benefits and requirements of the MARC program.

Benefits of the MARC Program:

1. You will receive a stipend of \$988 per month
2. In addition, if you are not currently receiving tuition support from any other source you may be eligible for tuition remission from the MARC Program\*. With this level of support it is expected that you will not take on additional paid employment. Focusing on your studies and research will be your priority. This will contribute to your success in the MARC program and allow you to progress toward your graduate school goals. \*The amount of tuition assistance available will depend on NIH policies and the amount actually awarded in the MARC grant.

# **Minimum of High School Education on the Job Training/Certificates**

- Ambulance Driver
- Certified Nursing Assistant
- Dental Assistant
- Dental Lab Technician
- EMT
- Home Health Aide
- Medical Records Clerk
- Optometric Assistant
- Pharmacist Assistant

# **Majors to Consider in the Health Sciences (2 year programs)**



# Minimum Associates Degree (2 years) Community College/Trade School

- Medical Assistant
- **Dental Hygienist**
- Medical Coder
- Clinical Lab Tech
- Cardiovascular Tech
- Surgical Assistant
- Physical Therapy Assistant
- LPN
- Radiography
- Ultrasonographer
- RN
- Health Info. Management
- Medical Transcriptionist
- Occupational Therapy Assistant
- Nuclear Medicine Tech
- Respiratory Therapist
- Veterinary Tech

# **Majors to Consider in the Health Sciences (4+ year programs)**

# Minimum Bachelor's Degree

- Dietician
- Medical Records Administrator
- Medical Social Worker
- Recreational Therapist
- Counselor
- Clinical Lab Scientist
- Health Educator
- Health Promotion Services
- Public Health

# Bachelor's Degree Plus

- Cytotechnology
- Nurse Practitioner
- Clinical Perfusionist
- Nurse Anesthetist
- Speech Language Pathologist
- Health Care Administration
- Physician's Assistant

# Graduate Degrees (Masters & Doctorate)

- Audiologist
- Genetic Counselor
- Nurse Executive
- Nurse Midwife
- Pathologist Assistant
- Optometrist
- Professional Counselor
- Dentist
- Physician
- Veterinarian
- Occupational Therapist
- Pharmacist
- Physical Therapist

*Questions?*

**Thank You!**