

College Admissions

How the Pandemic Made the Process Pivot



Meet Today's Presenters



Camille Crites
Syracuse University



Rick Diaz
Southern Methodist University



James Gilbey
University of Illinois
Urbana Champaign



GaryB
University of New Mexico

We are Admission Counselors



www.regionaladmissions.com

Save the Date : RACC E-vents

Meet 30 Reps in an hour

March 17, 2021 @ 6pm

March 25, 2021 @ 6pm

April 27, 2021 @ 6pm



www.regionaladmissions.com



Let's Talk Changes

How the Pandemic Made the Process Pivot

Discussion Focus Areas

Coursework / Grading

Tests - ACT / SAT

Activities / Extracurriculars

Demonstrated Interest / Visits & Connections

Coursework – What has changed?

- Curriculum
- School student attends
- Class rigor
- Where student falls with peers
- Course load

Have you taken advantage of academic opportunities offered to you?



Grades




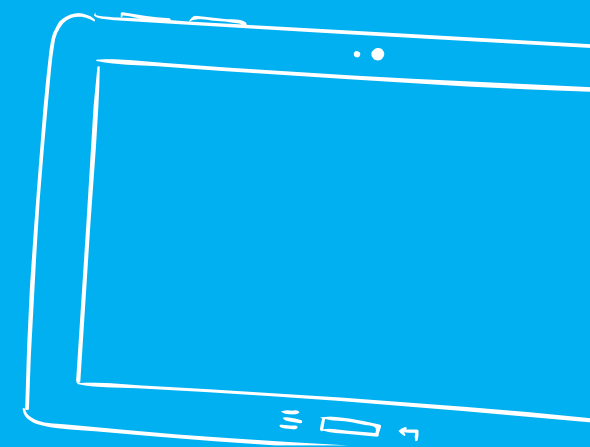
How will they be evaluated now?

- Weighted vs. Unweighted vs. Recalculated
- Trends
- Spring 2020 Grades –were your grades P/F or Letter grade?
- Fall 2020 Grades



Utilize Essays

Address Grades, Coursework, and Trends

- **Extra Information portion**
 - **Personal Essay**
 - **COVID-19 Essay**
 - **Interview**
- 
- 
- 
- 

SAT[®] ACT[®]



"We were originally thinking SAT, but then Noah's admissions advisor told us left-handed students born on Tuesdays do better on the ACT."



Both!



SAT ACT



Neither

How Do You Know?

ASK?

Admissions Counselors

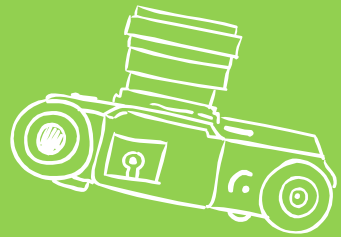


**Colleges may have
'pivot' policies**

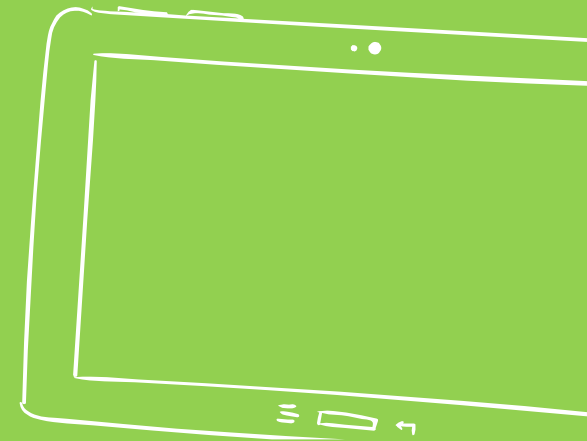




Test Required
Test Optional
Test Flexible
Test Free (Blind)



The California State University (CSU) will **temporarily** suspend the use of ACT/SAT examinations in determining admission eligibility for all CSU campuses for the 2021-2022 academic year. This temporary change of admission eligibility applies only for the Fall 2021, Winter 2022 and Spring 2022 admission cycles.



The logo for the University of California Admissions, featuring the words "UNIVERSITY OF CALIFORNIA" in white, stacked vertically, with "Admissions" in a smaller font to the right.

UNIVERSITY
OF
CALIFORNIA

Admissions

The SAT and ACT logos, with "SAT" in white on a blue background and "ACT" in white on a dark blue background.

SAT[®] ACT[®]

Fall 2021 ... UC will not consider SAT or ACT test scores when making admissions decisions or awarding Regents and Chancellor's scholarships.

If you choose to submit test scores as part of your application, they may be used to determine your eligibility for the California statewide admissions guarantee, as an alternative method of fulfilling minimum requirements for eligibility or for course placement after you enroll.

Increase in 2021 applicants to UCLA

28%

Freshman

48%

African
American

34%

Pacific
Islander

33%

Chicano/
Latino

16%

American
Indian

28%

First-gen

10%

Transfers

Fall 2020 – 108,937

Fall 2021 – 139,463

Youlonda Copeland-Morgan, UCLA vice provost for enrollment management
“... we also recognize that the **removal of standardized testing** as a requirement for admission played a role in these substantial increases.”



SAT[®]



COLLEGE BOARD
January 19, 2021

College Board Will No Longer Offer
SAT Subject Tests or SAT with Essay



SAT[®] ACT[®]



***You're more
than a test score.***



FairTest
The National Center for Fair and Open Testing

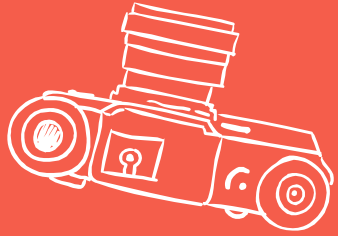
Website: FairTest.org

Activities and Extracurriculars

How did you pivot?

- Were you active before Covid?
- How did you pivot during this time
 - Restructure an activity on-line?
 - New activity?
 - Did you stop your extracurricular activities all together?

Demonstrated Interest



A light blue background featuring a collage of faint, hand-drawn icons related to school and technology. These include a computer keyboard, a USB drive, a printer, a smartphone, a pair of glasses, a spoon, a cup of coffee, a notepad, and a pair of earbuds.

Demonstrated Interest Before the Pandemic

- Visit to Campus
- Local Reception
- Interview
- High School Visit
- College Fairs
- E-mails and phone calls

Demonstrated Interest During the Pandemic

- Visit to Campus - varies
- Local Reception - varies
- Interview - varies
- High School Visit - varies
- College Fairs – varies
- E-mails and phone calls – no change



Demonstrated Interest During the Pandemic “Assumptions”

- Visit to Campus – not able to include on application
- Local Reception – virtual
- Interview - virtual
- High School Visit – virtual
- College Fairs – virtual
- E-mails and phone calls – huge upswing in volume

Smile – You're On Camera



- Visuals matter
- Mute Yourself
- Eating is Awkward
- Test BEFORE you go live
- This is a CLOSED set



Syracuse University



Location

Main campus is in Syracuse, New York, with U.S. centers in New York City, Los Angeles and Washington, D.C.; six study abroad centers around the world.

Undergraduate Enrollment

15,000+ students (including 1,500+ transfer students) representing 92 countries.

Majors

200 academic programs/100 minors within 10 schools and colleges.

Student-to-Faculty Ratio

15 to 1

Liberal Arts

The College of Arts and Sciences is the heart of the Syracuse liberal arts experience—and home to one-third of the undergraduate student body.

Average Class Size

26 (Nearly 60 percent of undergraduate classes have fewer than 20 students.)



Applying for Admission

Syracuse University uses the Common Application exclusively. You'll apply directly to one of the University's colleges or to a dual/combined program within two colleges.

Application deadlines*

- > **Early Decision:** November 15
- > **Regular Decision:** January 1
- > **Spring Admission (first-year or transfer):** November 15



**R-1
Research
Institution**



Becoming a Global Citizen

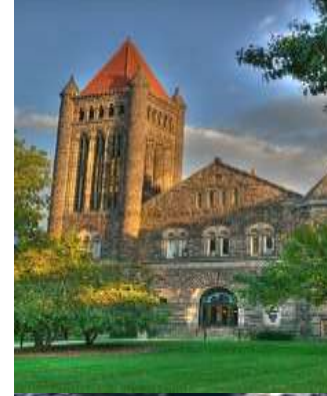
Campus Life: By the Numbers

- 19** residence halls
- 25+** residential learning communities
- 21** places to eat, including vegetarian, vegan, kosher and halal options (dining centers, cafés and food courts)
- 4** campus groceries
- 12** recreation/fitness facilities
- 300+** clubs and organizations



I ILLINOIS

- 150 academic programs
- 19:1 student-to-faculty ratio
- Research Park: 160 on-campus companies (Fortune 500 companies and start-ups)
- Tier 1 research university with more than \$600 million funding for research each year
- 69% of undergraduate students participate in research
- Big Ten Conference
- Programs Offered:
 - * Grainger College of Engineering
 - * Gies College of Business
 - * 10 “Computer Science Plus” majors
 - * Interdisciplinary Health Sciences
 - * On-campus veterinary, medical and law school
- 5,700 companies recruited on campus 2019
- Created own saliva based test for Covid-19 and students are tested twice a week
- Application Deadline EA: November 15th Regular: January 5th



SMU At a Glance



**2019 TOTAL STUDENT
ENROLLMENT | 11,824**
Undergraduates | 6,710
Graduates | 5,114

11:1 Student-to-Faculty Ratio



49% of Students Identify as Female
51% of Students Identify as Male
29% Students of Color

(Undergraduate and Graduate)

ADMITTED CLASS OF 2024

TEXAS | 37%
OTHER 49 STATES | 58%
OUTSIDE OF THE U.S. | 5%

Rick Diaz
Regional Director of Admission
rdiaz@smu.edu



- UNM – University Next to Mountains
- UNM – University w Numerous Majors
- UNM – University Nice as a Marriott
- UNM – Unlimited Number of Meals
- UNM – yoU Need Money (GPA 3.0+ = \$\$\$)
- UNM – University for NOW & MAÑANA
- Class of 2021 = Apply NOW!! (Test Optional)



FREE APPLICATION – EMAIL ME

Questions?

Time for Q&A ... What do you Say?
Please type your questions in the Q&A
We will do our best to answer!

Thanks for E-ttending

